

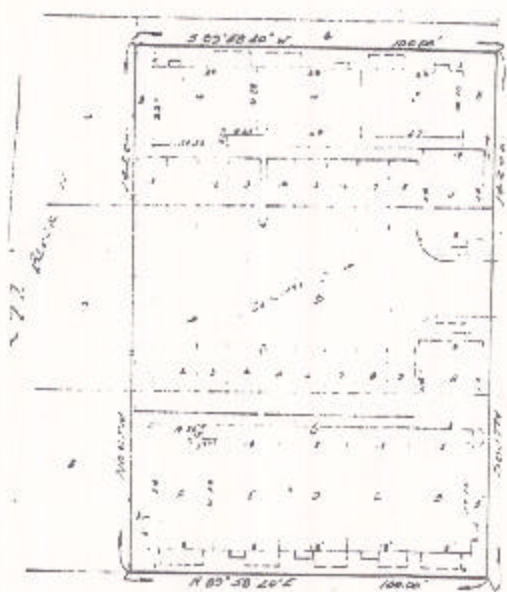
ASSESSOR'S BLOCK BOOK FOR HARRIS COUNTY, TEXAS

Block or BLDG. 1-2
 Abstract No. 696 Survey or Addition: PARK FAIRVIEW TOWNHOME CONDO. Plat No. 83-467 S. D. 01
 Description: Q. 32598 AC Q. SMITH SUR. A PARTIAL RESUBD. BLK. U. HYDE PARK HEIGHTS VOL. 18 PG. 58

PATENT					CERTIFICATE				
No.	Vol.	TO WHOM ISSUED	DATE			No.	CLASS	CHARACTER	TO WHOM
			M	D	Y				

Scale = one inch.
 K.L. DEVELOPERS 1983
 K.L. DEVELOPERS

Unit #	Approximate Square Footage	Individual %age Interest	Parking Spaces
A	827.00	7.75	A-1
B	1,106.60	10.38	B-1,B-2
C	1,106.60	10.38	C-1,C-2
D	1,106.60	10.38	D-1,D-2
E	1,106.60	10.38	E-1,E-2
F	1,349.90	10.79	F-1,F-2
G	1,185.40	11.13	G-1,G-2
H	1,120.20	10.52	H-1,H-2
I	1,120.20	10.52	I-1,I-2
J	827.00	7.75	J-1
	10,656.10	100.00	



PARK DRIVE

FAIRVIEW STREET