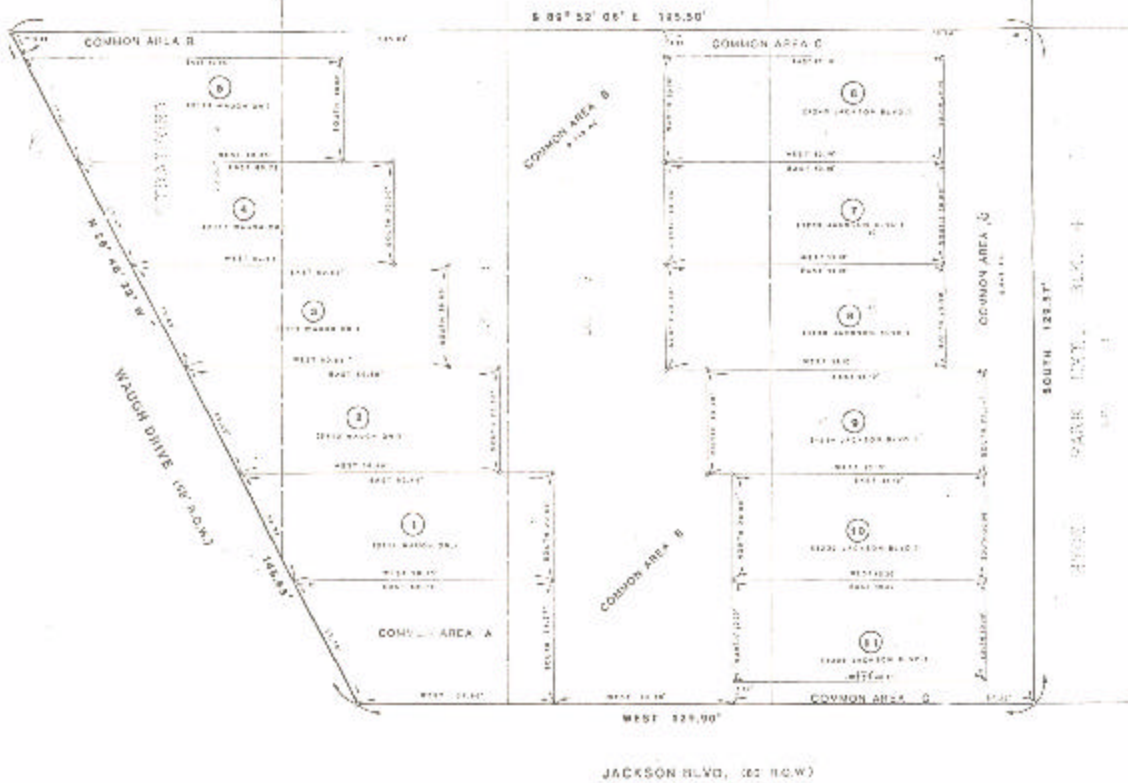


ASSESSOR'S BLOCK BOOK FOR HARRIS COUNTY, TEXAS

Block or BLDG. A, B, C
 Abstract No. 234 Survey or Addition STONEWALL JACKSON TOWNHOMES Plat No. 92-344 S. D. 51
 Description: 0.4846 AC. O. SMITH SUR. A RESUBD LITS. 1, 2, 3, BLK 4, HYDE PARK EXT. VOL. 18, PG. 46

PATENT					CERTIFICATE				
No.	Vol.	TO WHOM ISSUED	DATE			No.	CLASS	CHARACTER	TO WHOM ISSUED
			M	D	Y				

Scale = one inch.
 FRANK W. HEAD 1982
 FRANK W. HEAD & JAMES A. DISRELL



PERCENTAGE INTERESTS: The percentage interest in the ownership of the Common Elements appurtenant to the Unit is as follows:

Suite One	17.06%
Suite Two	14.02%
Suite Three	12.18%
Suite Four	10.54%
Suite Five	9.58%
Suite Six	10.24%
Suite Seven	11.23%