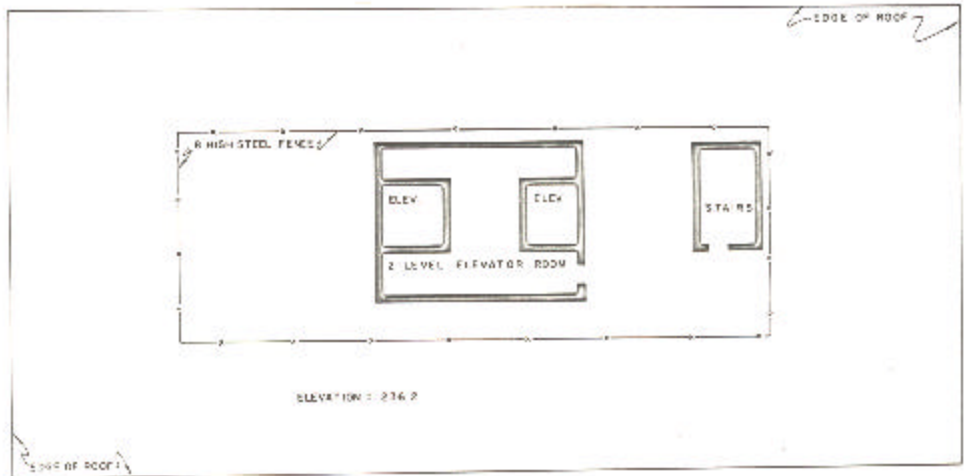


ASSESSOR'S BLOCK BOOK FOR HARRIS COUNTY, TEXAS

Bldg. E457, WEST Corner Lot
 Abstract No. 752, 850 Survey or Addition, The SUSSEX Condominium Plat No. 78-403 S. D. 01 Village
 Description: 44087 of C. Erickson A-752; C. McKenna Sur. A-560; S/S. Pl. Bk. 26 Sharpstown Ind. Pk. Sec. 11 and 15 or 16; S/S. Pl. for I. Bk. 3 Westmoreland, Form 540, 3, Vol. 52 pp. 7-3.

CONV. REC. VOL. 78 251		P A T E N T			C E R T I F I C A T E				
No.	Vol.	TO WHOM ISSUED	DATE			No.	CLASS	CHARACTER	TO WHOM ISSUED
			M	D	Y				

Scale NTS = one inch.
 SUSSEX APIS., ETAL. 10/78
 J. JERRY TOWERS, INC.



BUILDING W
 ROOF PLAN
 WEST BUILDING

Unless otherwise indicated,
 former claims are not shown
 and are contained in the
 record of this land and
 improvements.