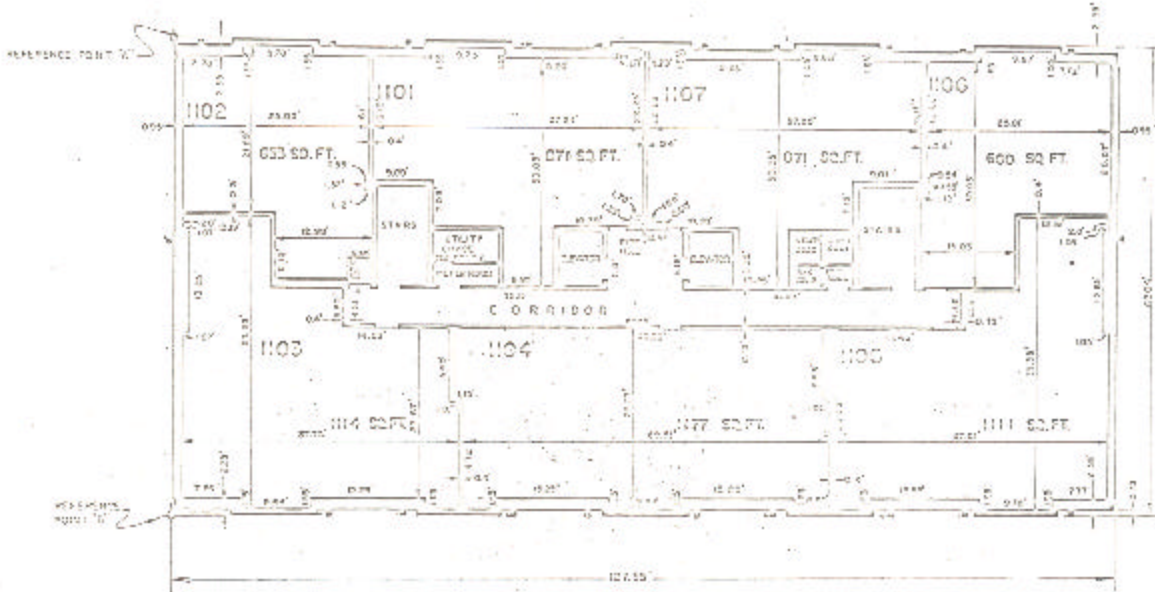


ASSESSOR'S BLOCK BOOK FOR HARRIS COUNTY, TEXAS

BLOCK EAST, WEST Common Law
 Abstract No. 252, 560 Survey or Addition The SUSSEX Condominium Plat No. 76-403 S. D. 01 Village
 Description: 44087 sq. C. Enlis Sec. 4-252, S. McKenna Sur. 4-262, R/2 Pt. No. 26. Shropshire and Pt. Sec. 1 on 93 sq. ft.; R/2 Pt. of 1 Bk. 13 Westmore and Farms Sec. 3 vol. 58 pp. 7-13

CONV. REC. NO. 78 sq.		PATENT			ACREAGE	No.	CLASS	CERTIFICATE	
No.	Vol.	TO WHOM ISSUED	DATE	CHARACTER				TO WHOM ISSUED	
			W	D	Y				

Scale NTS = one inch
 SUSSEX APTS., ETAL. 576
 SUSSEX TOWNS, NC



BUILDING W
 PLAN OF 11th FLOOR
 WEST BUILDING

Dimensions indicated
 are the result of a General
 Land are shown in the
 title of the land and
 improvements.