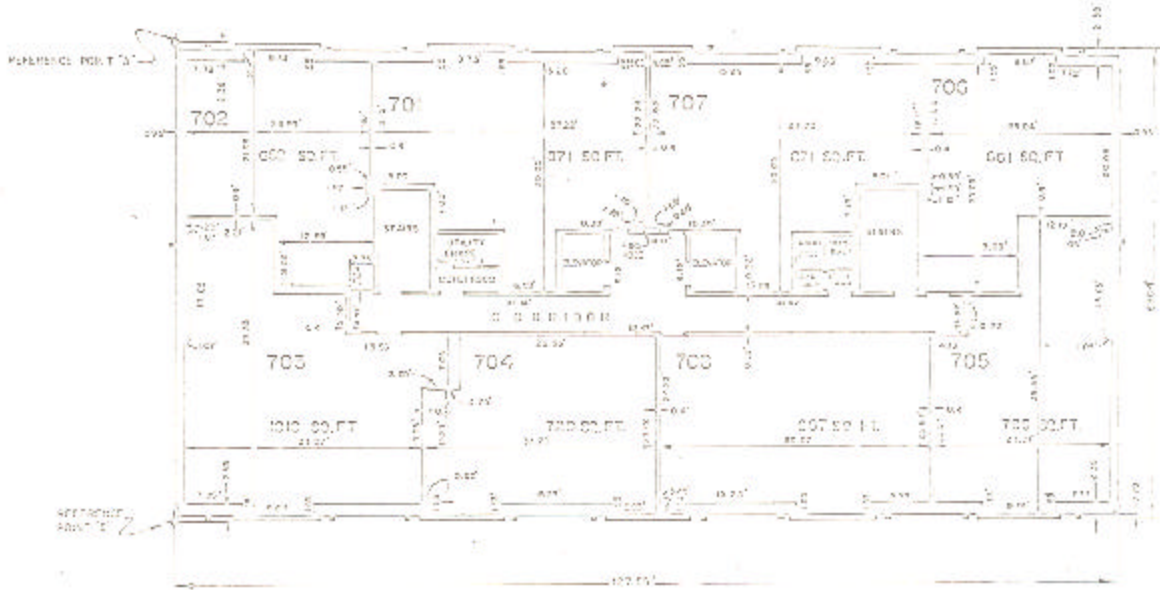


ASSESSOR'S BLOCK BOOK FOR HARRIS COUNTY, TEXAS

BLDG. EAST, WEST Common Land
 Abstract No. 222,960 Survey or Addition The SUSSEX Condominium Plat No. 78-403 S. D. 01 Village
 Description: 4007 sq. ft. 2 Story Bldg. 222, C. McKenna (for A 500 R/S PL 84 26 Shoptown Ind Pk Sec 11 and 13 to 16, N/2 Pt. 1 Blk. 2 Westwood Farm Sec 3 and 32, 33, 34)

COND. REC. and 78-403		PATENT			CERTIFICATE			
No.	Vol.	TO WHOM ISSUED	DATE	ACREAGE	No.	CLASS	CHARACTER	TO WHOM ISSUED
			M	D				

Scale N.T.S. — one inch
 SUSSEX APTS., ETAL, 1972
 SUSSEX TOWNS, INC.



BUILDING W
 PLAN OF 7th FLOOR
 WEST BUILDING

Unless otherwise indicated
 common elements and common
 areas are shown in the
 text of the plat and
 accompanying