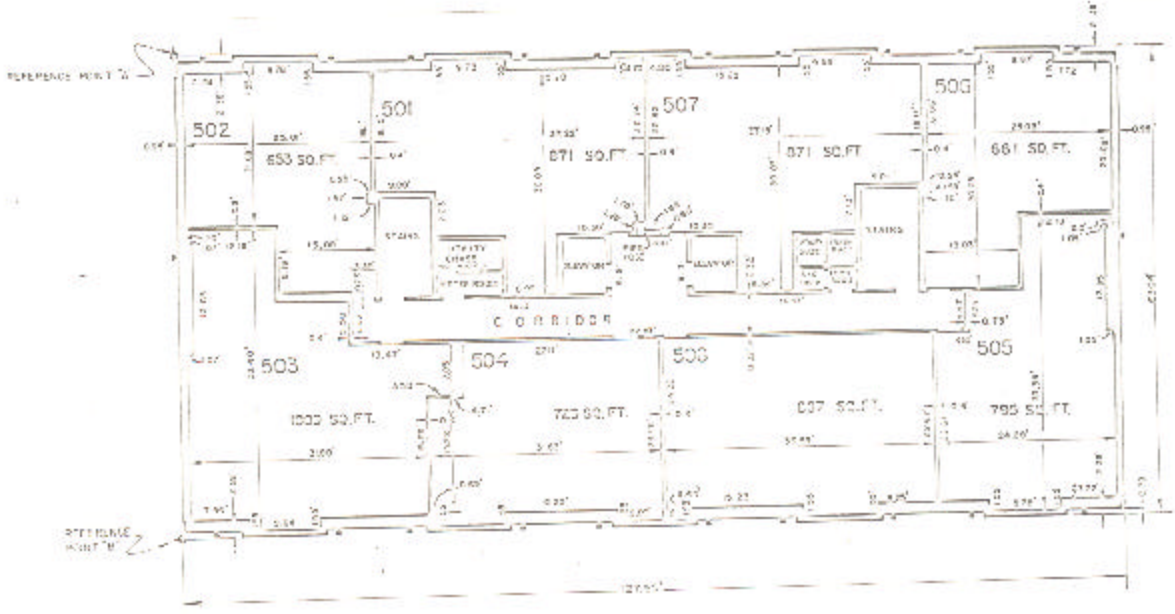


ASSESSOR'S BLOCK BOOK FOR HARRIS COUNTY, TEXAS

BLOK, EAST, WEST Common Law  
 Abstract No. 752, 563 Survey or Addition The SUSSEX Condominium Plat No. 78-403 S. D. Of Village  
 Description: 4409726, C, East 5th & 252; C, McKenna Sur & 252, 9/5, 11 Blk. 25 Sheraton no. 78 Sec II and 22 pg 8; 9/5 11, 9/11 23 12 Westmoreland Farms Sec. 2, 40, 52 pg 7-12

PATENT				CERTIFICATE					
No.	Vol.	TO WHOM ISSUED	DATE			No.	CLASS	CHARACTER	TO WHOM ISSUED
			M	D	Y				

Scale N.T.S. = one inch.  
 SUSSEX APIS, ETAL, 978  
 SUSSEX TOWERS, INC.



BUILDING W  
 PLAN OF 5th FLOOR  
 WEST BUILDING

Unless otherwise indicated  
 Common Elements are shown  
 and are necessary in the  
 total to the land and  
 improvements.