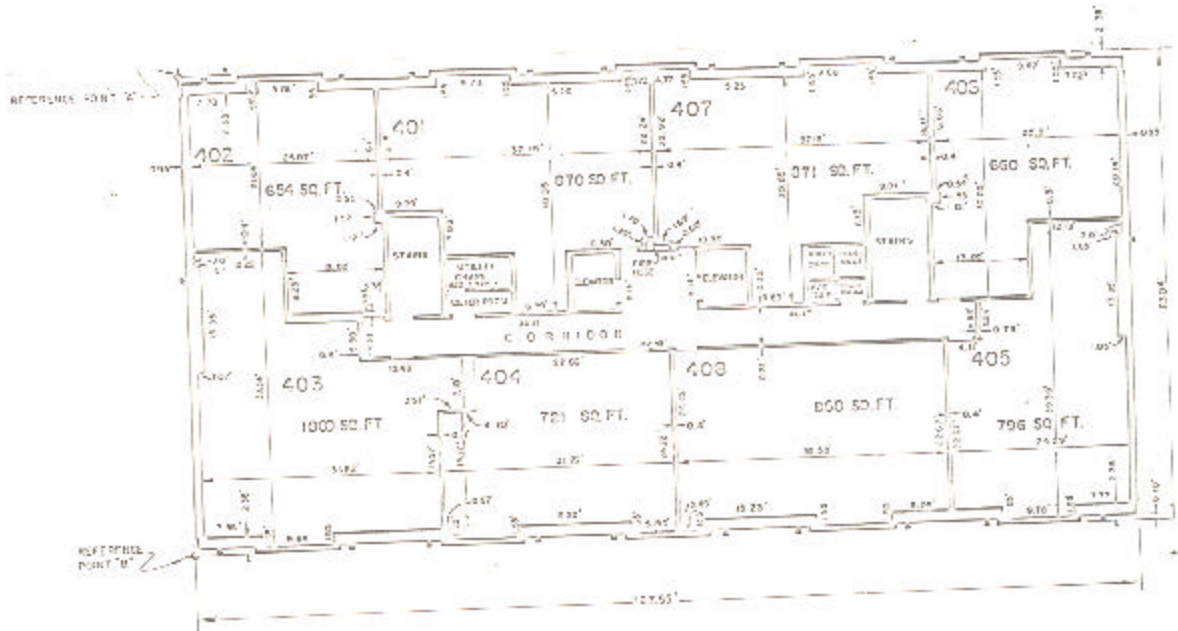


ASSESSOR'S BLOCK BOOK FOR HARRIS COUNTY, TEXAS

BLOS. EAST, WEST Common Land
 Abstract: No. 224, 282 Survey or Addition: The SUSSEX Condominium Plat No. 78-403 S. D. 01 Village
 Description: 4.4097 AC. C. Everts Sur A-757; D. McGettys Sur A-280, 678; P. B. 25 Sheraton, Inc. Pl. Sec II vol 92 pg 6; S/S Pl. 61 Blk 13 Westwoodlawn Form No. 2 vol 92 pg 7-5

COND. NO. vol. 78 pg		PATENT			ACREAGE	No.	CLASS	CERTIFICATE	
No.	Vol.	TO WHOM ISSUED	DATE	TO WHOM ISSUED					
			M	D	Y			CHARACTER	

Scale N.T.S. = one inch.
 SUSSEX APPTS. ETAL, 1978
 SUSSEX TOWERS, INC



BUILDING W
 PLAN OF 4TH FLOOR
 WEST BUILDING

Unless otherwise indicated
 Common Elements and Common
 Land are included in the
 total of the land and
 improvements.