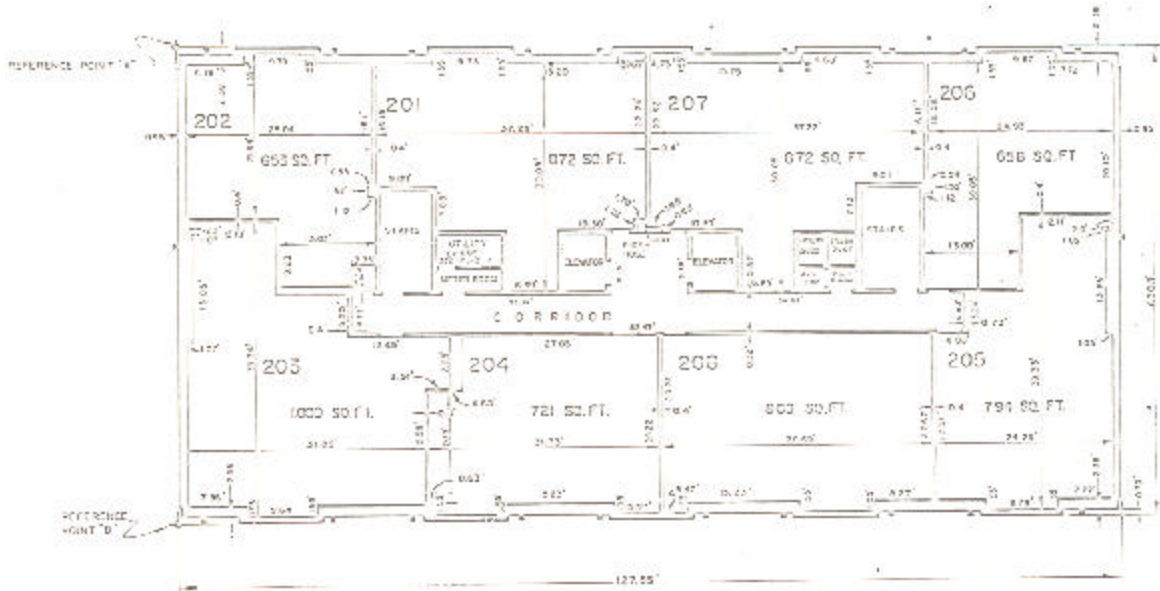


ASSESSOR'S BLOCK BOOK FOR HARRIS COUNTY, TEXAS

BLDG. EAST, WEST Cover Land Abstract No. 202,500 Survey or Addition The SUSSEX Condominium Plat No. 78-403 S. D. 0' Village  
 Description 44087 sq. C. Corle Sur A 252; C. Mottram Sur A 560, 875; P. Bl. 25 Shortstop Int. P. Sec. II, Vol. 92 pg. 8, 8/5 Pl. 1st, 39, 13 Westmaners Farms Sec. 3, Vol. 97, pg. 7, 13.

COND. REC. Vol. 78 pg.		P A T E N T			ACREAGE	No.	CLASS	C E R T I F I C A T E S	
No.	Vol.	TO WHOM ISSUED	DATE	CHARACTER				TO WHOM ISSUED	
			M	D	Y				

Scale N.T.S. = one inch  
 SUSSEX APTS. ETAL, 573  
 SUSSEX TOWERS, 40.



BUILDING W  
 PLAN OF 2nd FLOOR  
 WEST BUILDING

Interpretation indicated  
 General Dimensions and Section  
 Lines are measured in the  
 level of the less and  
 improvements.