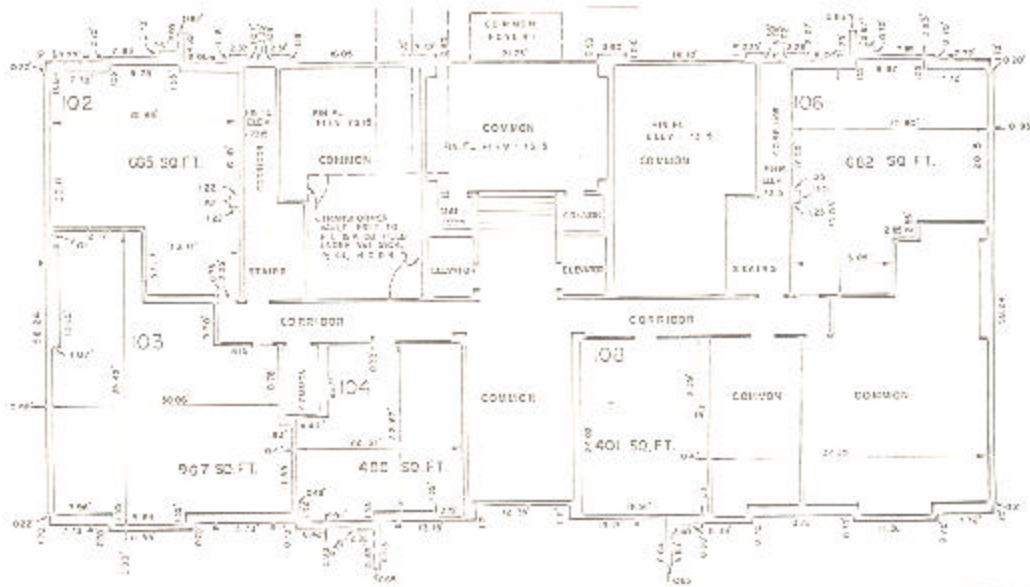


ASSESSOR'S BLOCK BOOK FOR HARRIS COUNTY, TEXAS

31.00 EAST, WEST Common Land
 Abstract No. 252, 260 Survey or Addition: The SUSSEX Condominium Plot No. 78-403 S. D. 01 Village
 Description: 4 ACRES ± Frank Sur. A 252; C. McKenna Sur. A 550, R/2 PL 29, 26 Shepley and Ind. Pl. Sec. 11 vol. 93 pp. 51; R/2 Pl. 1st Blk. 2 West Industrial Farms Sec. 3 vol. 52 pp. 7-13

COND. REC. vol. 78 pp. 1		PATENT			ACCRABOR	No.	CLASS	CERTIFICATE	
No.	Vol.	TO WHOM ISSUED	DATE	CHARACTER				TO WHOM ISSUED	
			M	D	Y				

Scale NTS = one inch =
 SUSSEX ARTS, ET AL., 1978
 SUSSEX TOWERS, INC.



BUILDING W
 PLAN OF 1st FLOOR
 WEST BUILDING

Unless otherwise indicated
 common dimensions and standard
 load are required in the
 total of all land and
 improvements.