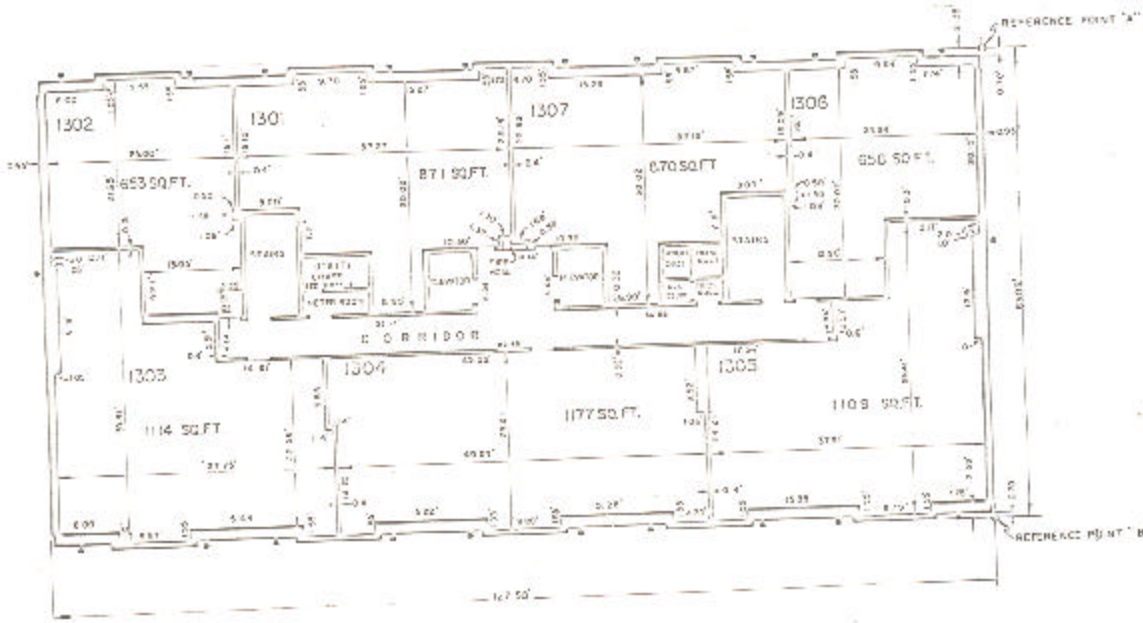


ASSESSOR'S BLOCK BOOK FOR HARRIS COUNTY, TEXAS

BLOG. EAST WEST Common Land
 Abstract No. 242, 243 Survey or Addition The SUSSEX Condominium Plat No. 78-403 S. D. O' Village
 Description: 4408704, C, East of A 252, C McKeuzer Sub A-560, R/S, Pt Blk 26 Sheraton rd 79 Sec 11 vol 92 pg 61, R/S Pt. bl. 3k 13 Westwinds Farms Sec 2, vol 92 pg 7-12

2053 REC. vol 78 pg		PATENT				ACREAGE	No.	CLASS	DESCRIPTION	TO WHOM ISSUED
No.	Vol.	TO WHOM ISSUED	DATE							
			M	D	Y					

Scale N.T.S. = one inch.
 SUSSEX APTS. ETAL, 978
 SUSSEX TOWERS, NC.



BUILDING E
 PLAN OF 13th FLOOR
 EAST BUILDING

Unless otherwise indicated
 Common Elements and Common
 Land are shown in the
 total of the land and
 improvements.