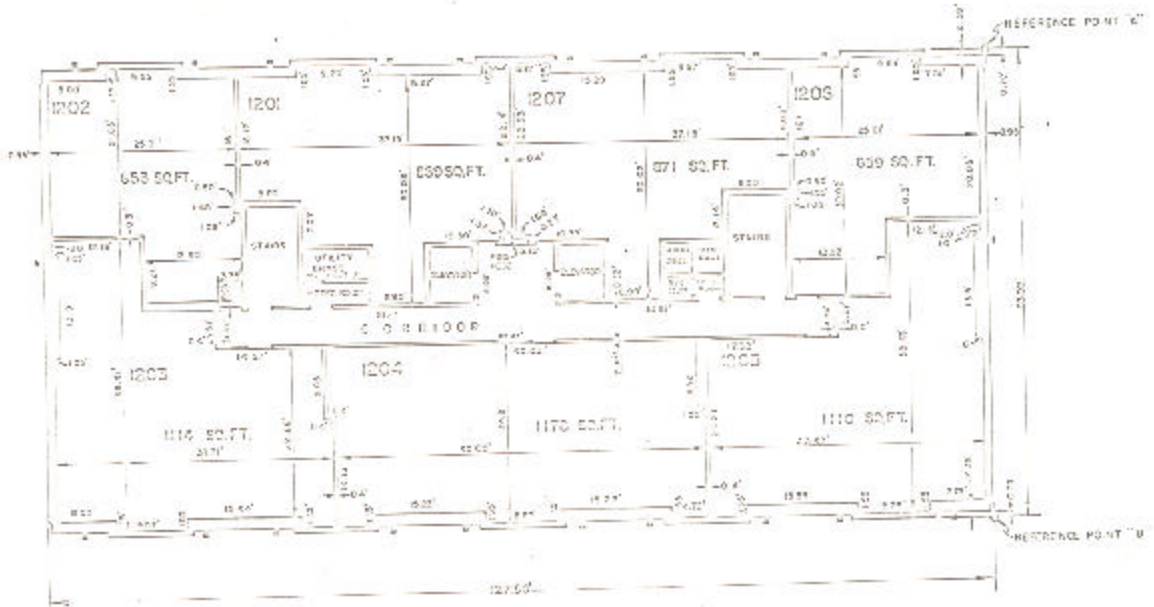


ASSESSOR'S BLOCK BOOK FOR HARRIS COUNTY, TEXAS

BLOC. EAST, WEST Common Land
 Abstract No. 252, 260 Survey or Addition The SUSSEX Condominium Plat No. 78-403 S D 01 Village
 Description: 44057 ac. C. Frank See A 257; C. McKenna Sur G 282, 1/2 Pt Blk 26, Sheraton 1st Pk Sec II vol 93 pg 6; 5/2 Pt Blk 13 Westmoreland Farms Sec 3, vol 52 pg 7-13

| P A T E N T | | | | | C E R T I F I C A T E | | | | | |
|-------------|------|----------------|------|---|-----------------------|---------|-----|-------|-----------|----------------|
| No. | Vol. | TO WHOM ISSUED | DATE | | | AcREAGE | No. | CLASS | CHARACTER | TO WHOM ISSUED |
| | | | M | D | Y | | | | | |

Scale N 1 S - one inch.
 SUSSEX APTS., ET AL, 1978
 SUSSEX TOWERS, INC.



BUILDING E
 PLAN OF 12th FLOOR
 EAST BUILDING

Unless otherwise indicated
 Geron T. L. and J. and J. and J.
 Land are recorded in the
 tract of the land and
 improvements.