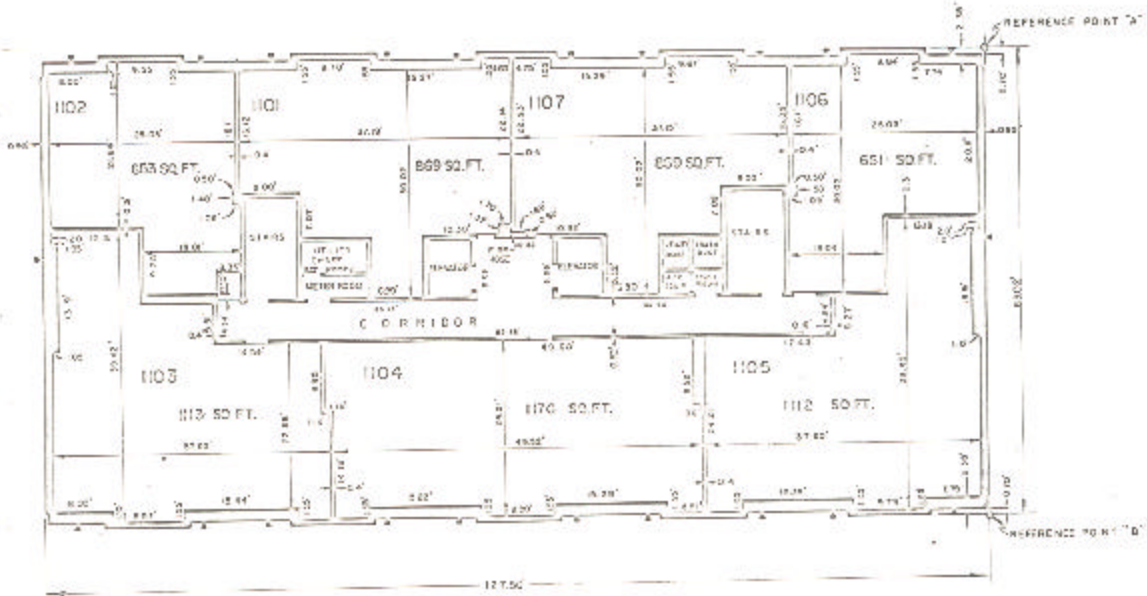


ASSESSOR'S BLOCK BOOK FOR HARRIS COUNTY, TEXAS

BL 39, EAST WEST Common Land
 Abstract No. 782,560 Survey or Addition The SUSSEX Condominium Plat No. 78-403 S. D. 01
 Description: 5-6-287-55, C. E. M.'s Sur. A-252, C. McFarland Sur. A-960; R/S, Pl. 89, 28 Sharpstown Ind. Pl. Sec. 11 vol. 93 pp. 53; R/S Pl. 101 Blk. 3 Westmoreland Farms Sec. 3 vol. 52, pp. 7-13.

CO. REC. vol. 78 pg. 1		P A T E N T				C E R T I F I C A T E			
No.	Vol.	TO WHOM ISSUED	DATE	ACRAGE	No.	CLASS	CHARACTER	TO WHOM ISSUED	
			M	D					

Scale N.T.S. = one inch.
 SUSSEX APTS. ETAL, 1979
 SUSSEX TOWERS, INC.



BUILDING E
 PLAN OF 11th FLOOR
 EAST BUILDING

Unless otherwise indicated
 corner dimensions are shown
 in feet and inches in the
 text of the plat and
 enclosures.