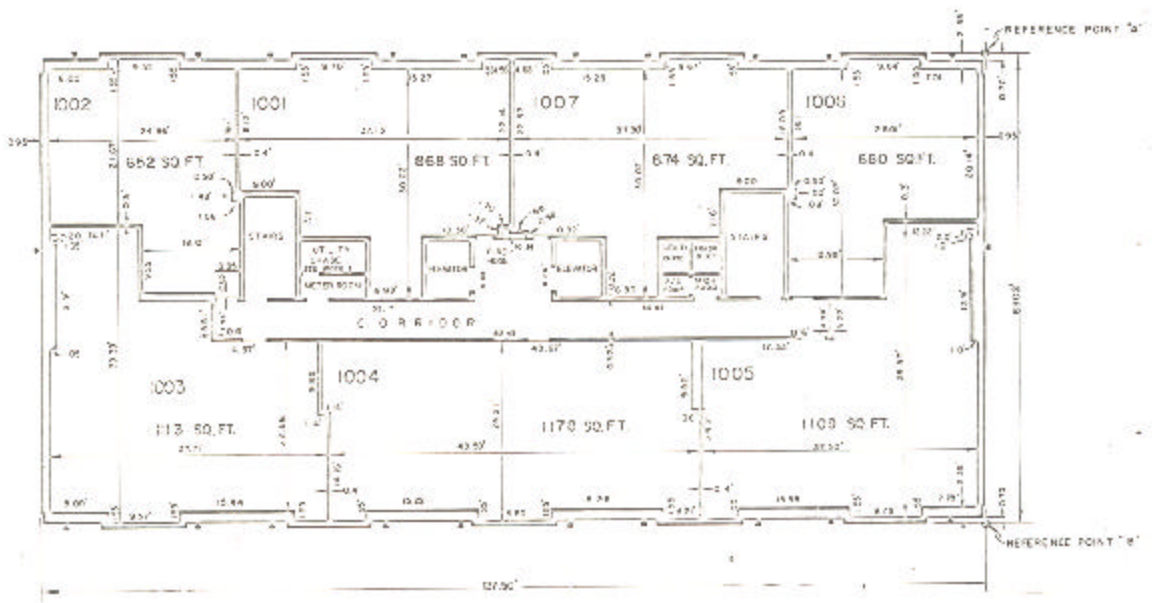


ASSESSOR'S BLOCK BOOK FOR HARRIS COUNTY, TEXAS

Block EAST WEST Corner Land  
 Abstract No. 294, 283 Survey or Addition The SUSSEX Condominium Plat No. 78-403 S. D. 01 Village  
 Description: 4 4087 sq. ft. Paris Sur A-252; 2 No. Garza Sur A-560; 67.5 Pl. 24 26 Sharpstown Ind. Pk. Sec. 11 vol. 95 pg. 6; 1/2 Pl. for 1 Bldg. 3 Westwoodland Farms Sec. 3 vol. 92 pg. 7-13

COND. REC. vol. 78 pg.		PATENT			ACREAGE	No.	CLASS	CERTIFICATE	
No.	Vol.	TO WHOM ISSUED	DATE					CHARACTER	TO WHOM ISSUED
			M	D	Y				

Scale N.T.S. = one inch.  
 SUSSEX APTS. 1751, 1977  
 SUSSEX TOWERS, INC.



BUILDING E  
 PLAN OF 10th FLOOR  
 EAST BUILDING

This plan is to be filed as  
 Conditional Plat and Conditional  
 Plat and is subject to the  
 rules of the land and  
 improvements.