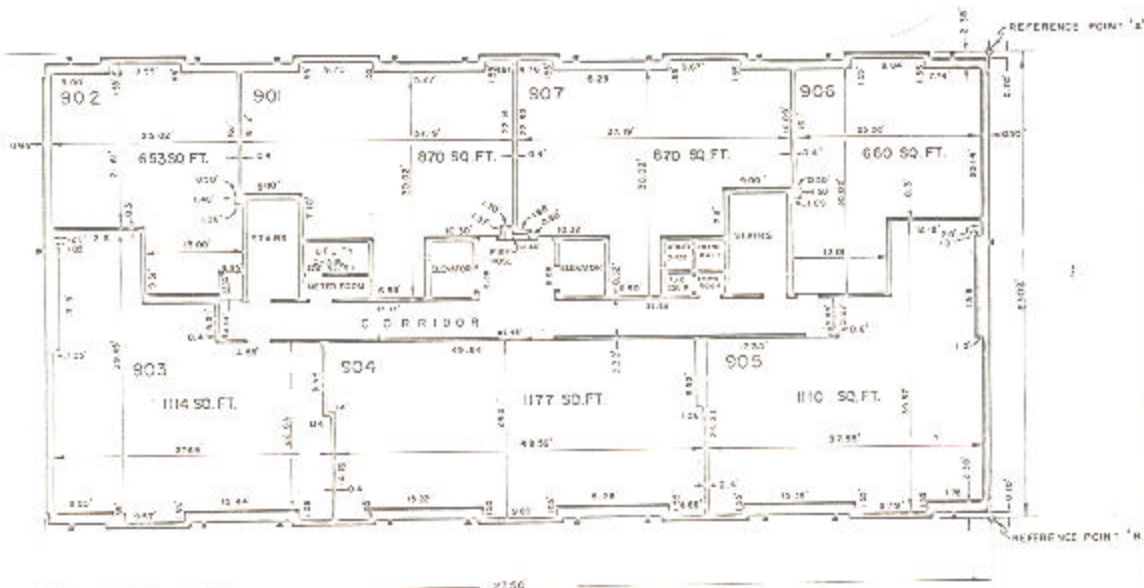


ASSESSOR'S BLOCK BOOK FOR HARRIS COUNTY, TEXAS

E.D. EAST, WEST Corner Land  
 Abstract No. 757, 880 Survey or Addition The SUSSEX Condominium Plat No. 78-403 S. D. 01 Village  
 Description 44287 ac. C. Ellis Sur. A 252; C. McKee Sur. A 550; R/S Pl. 29.28 Sharptown Ind. Pl. Sec. 11 vol. 93 25, 81, 2/8 Pl. for 1 Bk. 3 Westmore and Forms Sec. 3 vol. 52 29, 7-13

COND. REC. VOL. 78 PG. 1		P A T E N T			C E R T I F I C A T E					
No.	Vol.	TO WHOM ISSUED	DATE			ACREAGE	No.	CLASS	CHARACTER	TO WHOM ISSUED
		M D Y								

Scale N.T.S. = one inch.  
 SUSSEX AP'S., 514L, 1978  
 SUSSEX TOWERS, INC.



BUILDING E  
 PLAN OF 9th FLOOR  
 EAST BUILDING

This map of the land described  
 contains elements and changes  
 Level and recorded in the  
 title of the land and  
 improvements.