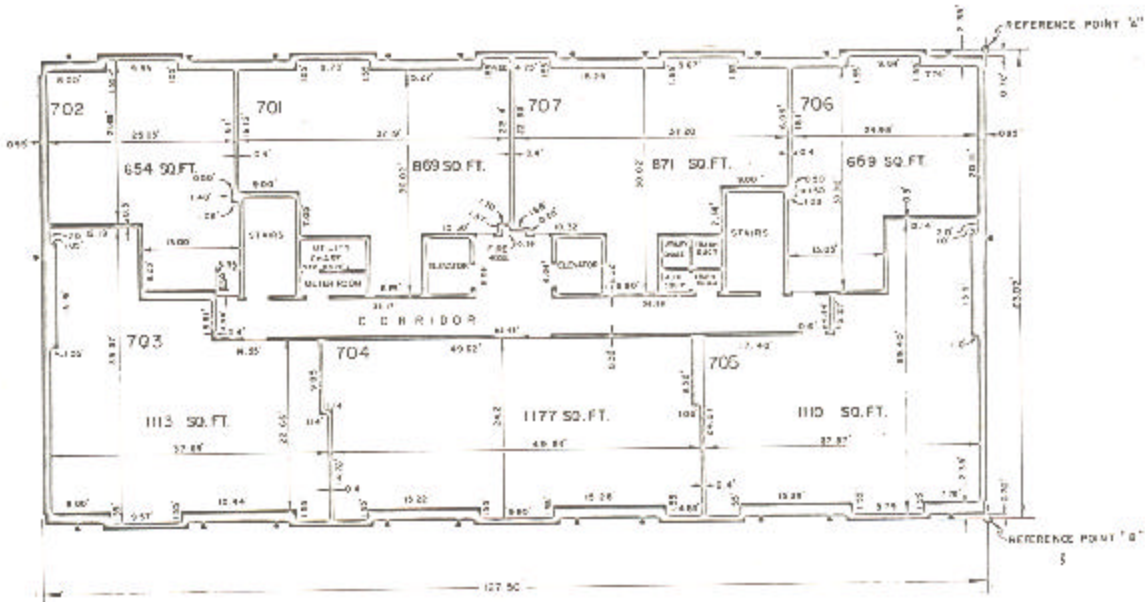


ASSESSOR'S BLOCK BOOK FOR HARRIS COUNTY, TEXAS

BLDG. EAST, WEST Common Land  
 Abstract No. 952, 960 Survey or Addition The SUSSEX Condominium Plat No. 78-403 S. D. 01 Village  
 Description: 44087 ac. C. Ernie Sur A 252; C. McKenna Sur A 250; R/S Pl Bk 26 Sharpsdown Ind Pl, Sec. 1 vol. 93 pg 5; R/S Pl lot 1 Bk 13 Westbrooked Farms Sec. 3 vol. 52 pg. 1-13

COND. REC. vol. 78 pg 1		PAYMENT			ACREAGE		CERTIFICATE	
No.	Vol.	TO WHOM ISSUED	DATE			No.	CLASS	TO WHOM ISSUED
			M	D	Y			

Scale N.T.S. = one inch.  
 SUSSEX AP'LS, LTA., 1979  
 SUSSEX TOWERS, INC.



BUILDING E  
 PLAN OF 7th FLOOR  
 EAST BUILDING

Plat No. 78-403, which includes  
 Common Land and Common  
 Land are shown in the  
 total of the land and  
 improvements.