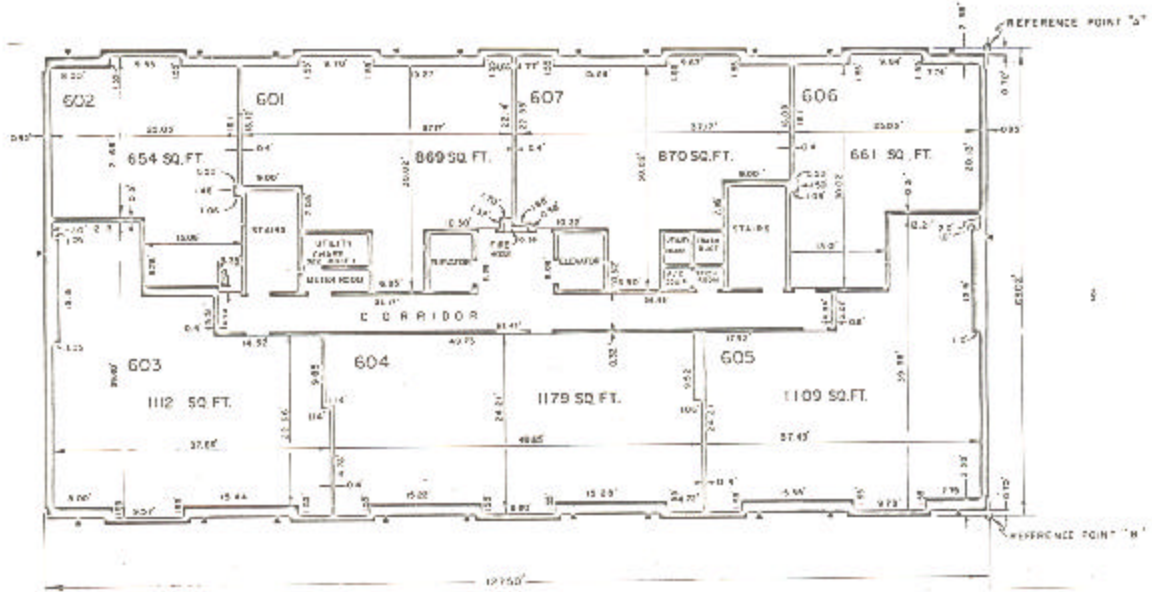


ASSESSOR'S BLOCK BOOK FOR HARRIS COUNTY, TEXAS

BLDG. EAST, WEST Common Land
 Abstract No. 282,582 Survey or Addition The SUSSEX Condominium Plat No. 78,403 s. D. 01 Village
 Description: A 4227 ac. C. Erskine Sur. A 252, C. McKinnis Sur. A 280, K/S PL BK 26 Springtown Ind. Pk. Sec. 11 vol. 93 pp. 51; S/8 Pt. 1 of Bk. 3 Westwood Farm Sec. 3 vol. 52 pp. 7-13.

COND. REC. vol. 78 pg. 1		PATENT			CERTIFICATE				
No.	Vol.	TO WHOM ISSUED	DATE			No.	CLASS	CHARACTER	TO WHOM ISSUED
			M.	D.	Y.				

Scale N.T.S. = one inch
 SUSSEX APTS., ETAL, 1978
 SUSSEX TOWERS, INC.



426 06

BUILDING E
 PLAN OF 6th FLOOR
 EAST BUILDING

As per stipulation reflected
 in the plat and Common
 Plat and approved in the
 total of the land and
 improvements.