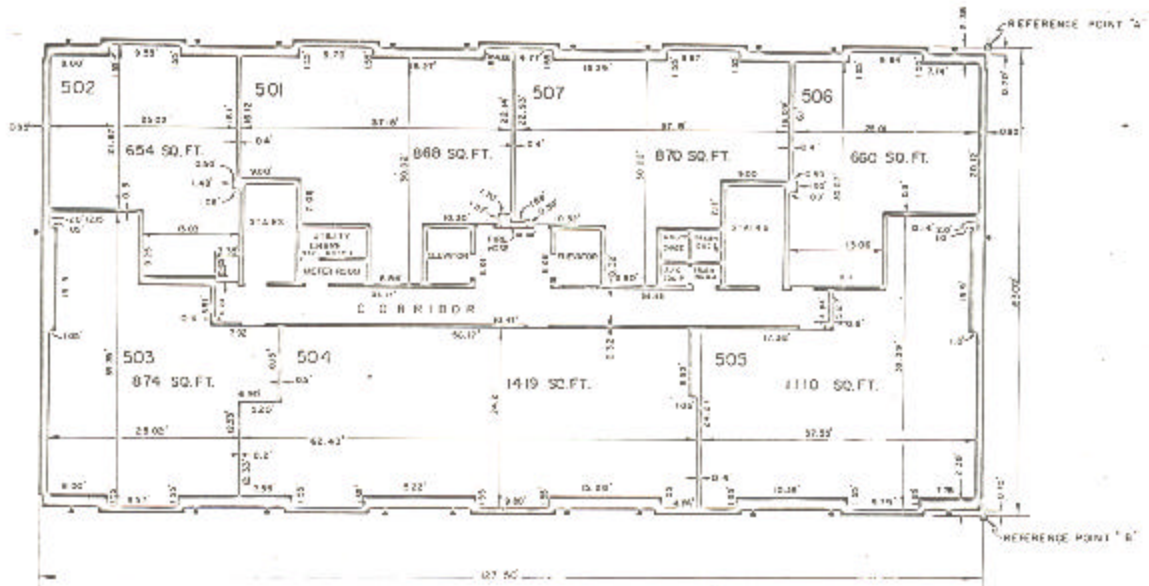


ASSESSOR'S BLOCK BOOK FOR HARRIS COUNTY, TEXAS

BLDG. EAST WEST Common Land
 Abstract No. 282,282 Survey or Addition The SUSSEX Condominium Plat No. 78-403 S D 01 Village
 Description: 44087 st. C. East Sur. A 252; C. McLeslie Sur. A 560; B/S. Pr. Riv. Pt. Subdivision for Pa. Sec. II, vol. 93, pg. 81, R/S. Pt. 1st. Blk. 13 Westmoreland Form. Sec. 2, pp. 92, 99, 7, 13.

COND. REC. vol. 78 pg.		PATENT				CERTIFICATE				
No.	Vol.	TO WHOM ISSUED	DATE			ACREAGE	No.	CLASS	CHARACTER	TO WHOM ISSUED
			M	D	Y					

Scale N.T.S. = one inch.
 SUSSEX APTS., ETAL., 1978
 SUSSEX TOWERS, INC.



BUILDING E
 PLAN OF 5th FLOOR
 EAST BUILDING

Unless otherwise indicated
 Common Elements are Common
 Land and appurtenant to the
 to all of its land and
 improvements.