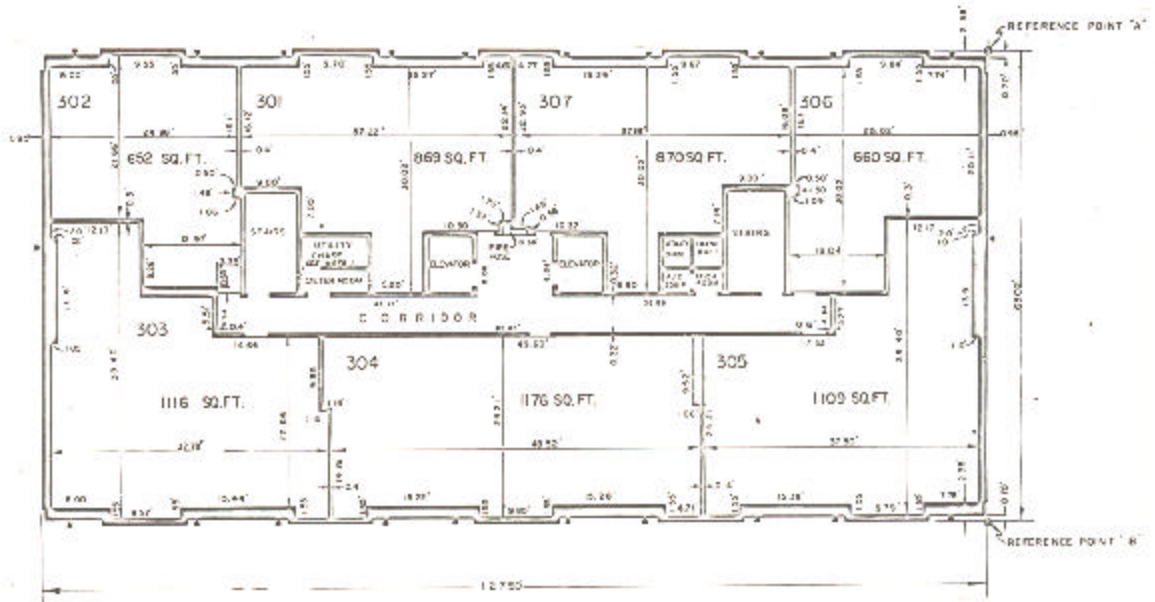


ASSESSOR'S BLOCK BOOK FOR HARRIS COUNTY, TEXAS

BLDG. EAST WEST Common Land
 Abstract No. 582, 560 Survey or Addition The SUSSEX Condominium Pl. No. 78-403 S. D. 01 Village
 Description: A 5087 sq. ft. Easement for A 250; C. McKenna for A 550; R/S PL 29.26 Sharpsown Ind. Pl. Sec. 11 vol. 93 pg. 15, R/S Plat. 1 Blk. 15 Westwoodland Farms Sec. 3 vol. 92, pg. 7-13.

PATENT				CERTIFICATE				
No.	Vol.	TO WHOM ISSUED	DATE	ACREAGE	No.	CLASS	CHARACTER	TO WHOM ISSUED
			M D Y					

Scale N.T.S. = one inch.
 SUSSEX AP'S, LTA., 1978
 SUSSEX TOWERS, INC.



BUILDING E
 PLAN OF 3rd FLOOR
 EAST BUILDING

Unless otherwise indicated
 Common Elements are Common
 Land and included in the
 total of the land and
 improvements.