

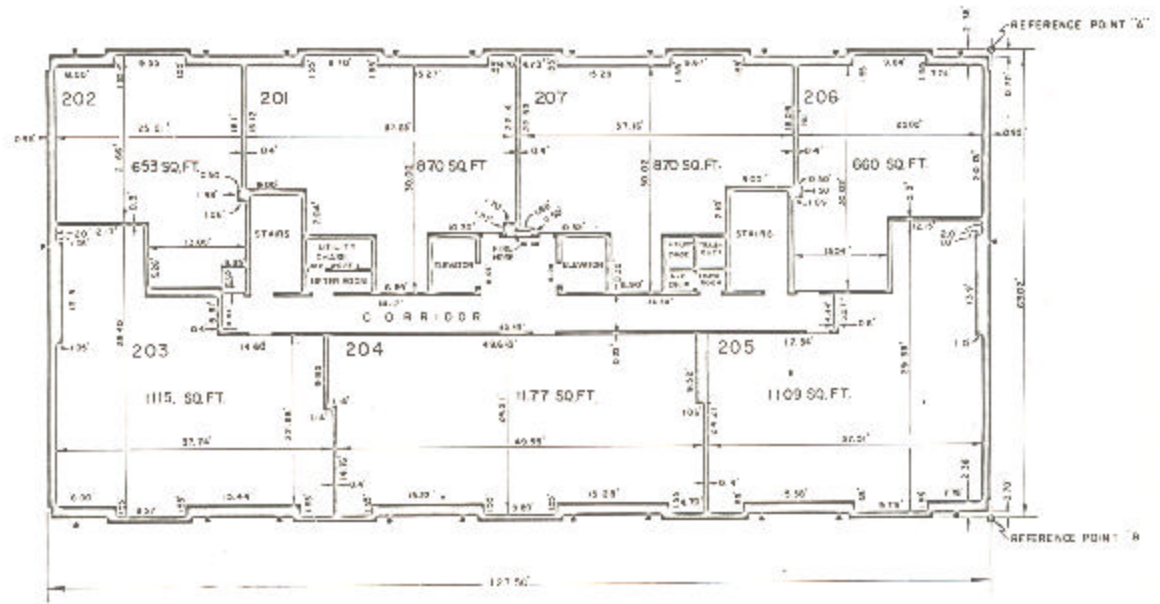
ASSESSOR'S BLOCK BOOK FOR HARRIS COUNTY, TEXAS

BLDG. EAST, WEST Common Land  
 Abstract No. 352,260 Survey or Addition  
 Description: 54087 ac., C. Enns Sur. A-257; C. McKeele Sur. A-550; R/S. PL 89, 26 (Shoreline Ind. Pk. Sec. 11 vol. 25 pg. 6); R/S PL for I Bldg. 3 Westmoreland Farms Sec. 3 vol. 52 pg. 7-13

The SUSSEX Condominium Plat No. 78-403 S. D. 01 Village

COND. REC. vol. 78 pg 1		PATENT			CERTIFICATE					
No.	Vol.	TO WHOM ISSUED	DATE			ACREAGE	No.	CLASS	CHARACTER	TO WHOM ISSUED
			M	D	Y					

Scale NTS — one inch.  
 SUSSEX APTS., ETAL., 978  
 SUSSEX TOWERS, INC.



BUILDING E  
 PLAN OF 2nd FLOOR  
 EAST BUILDING

Minor dimensions not shown  
 Common dimensions and corners  
 and are shown in the  
 total of the land and  
 improvements.