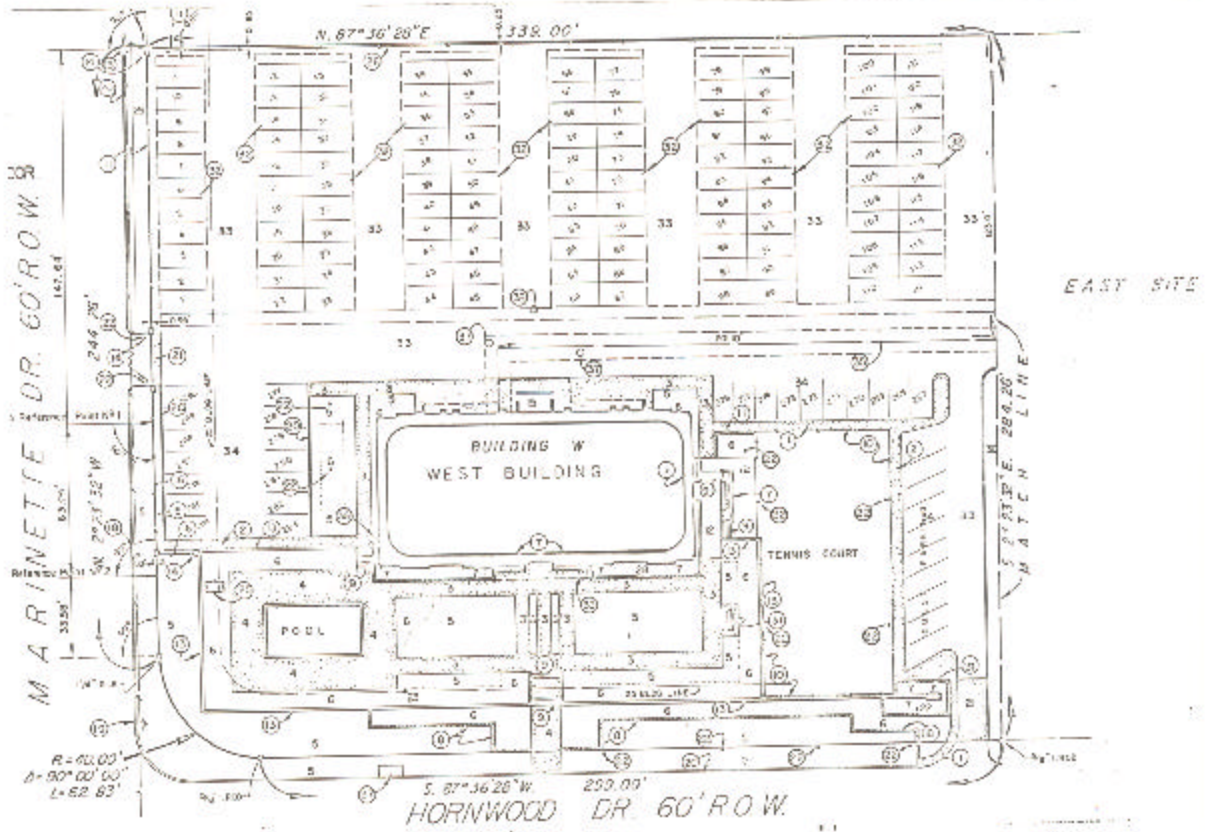


ASSESSOR'S BLOCK BOOK FOR HARRIS COUNTY, TEXAS

HUG EAST, WEST Common Land
 Abstract No. 268,560 Survey or Addition The SUSSEX Condominium Plat No. 78-403 S. D. 01 Village
 Description: 440B726, C, Enns Sur A-252; D Wokeville Sur A 560, N/S PL 68, 28 Sharpstown Ind Pt. Sec II vol 93 of 6; N/S PL 1st 1 Bld. 2 Westmorland Form Sec 3 vol 92, pg 7, 13

CONG. REC. vol. 78 pg 1			PATENT			CERTIFICATE			
No.	Vol.	TO WHOM ISSUED	DATE			No.	CLASS	CHARACTER	TO WHOM ISSUED
			M	D	Y				

Scale NTS = one inch.
 SUSSEX APTS., ETAL., 1978
 SUSSEX TOWERS, INC.



Unless otherwise indicated
 to not include and shown
 to be included in the
 total of the land and
 improvements.

