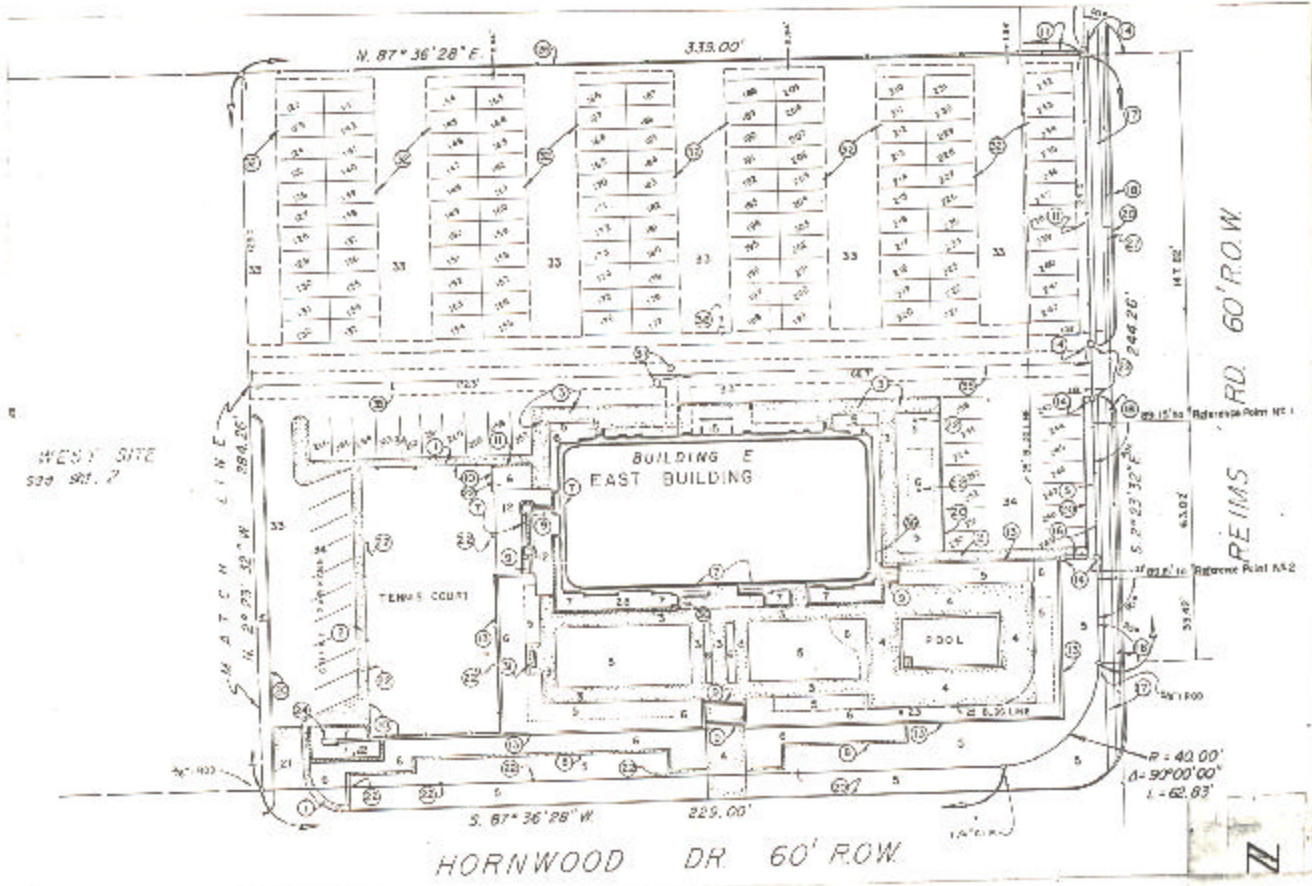


ASSESSOR'S BLOCK BOOK FOR HARRIS COUNTY, TEXAS

BLDG. EAST, WEST Common Land
 Abstract No. 752, 580 Survey or Addition The SUSSEX Condominium Plat No. 78-403 S. D. 01 Village
 Description: 44087.00, C. Erskine Sur. 4-752; C. McKee Sur. 4-550; R/S Pl. 30, 20, Sharpman Ind. Pk. Sec. 11 vol. 93 pg. 61; R/S Pt. 101 Bk. 15 Westmoreland Farms Sec. 3 vol. 52 pg. 7-13

COND. REC. vol. 78 pg. 1				PATENT			CERTIFICATE			
No.	Vol.	TO WHOM ISSUED	DATE	ACREAGE	No.	CLASS	CHARACTER	TO WHOM ISSUED		
									M	D

Scale N.T.S. = one inch.
 SUSSEX APTS., CTAL, 1976
 SUSSEX TOWERS, INC



Unless otherwise indicated
 certain elements and location
 have been surveyed in the
 total of the land and
 improvements.