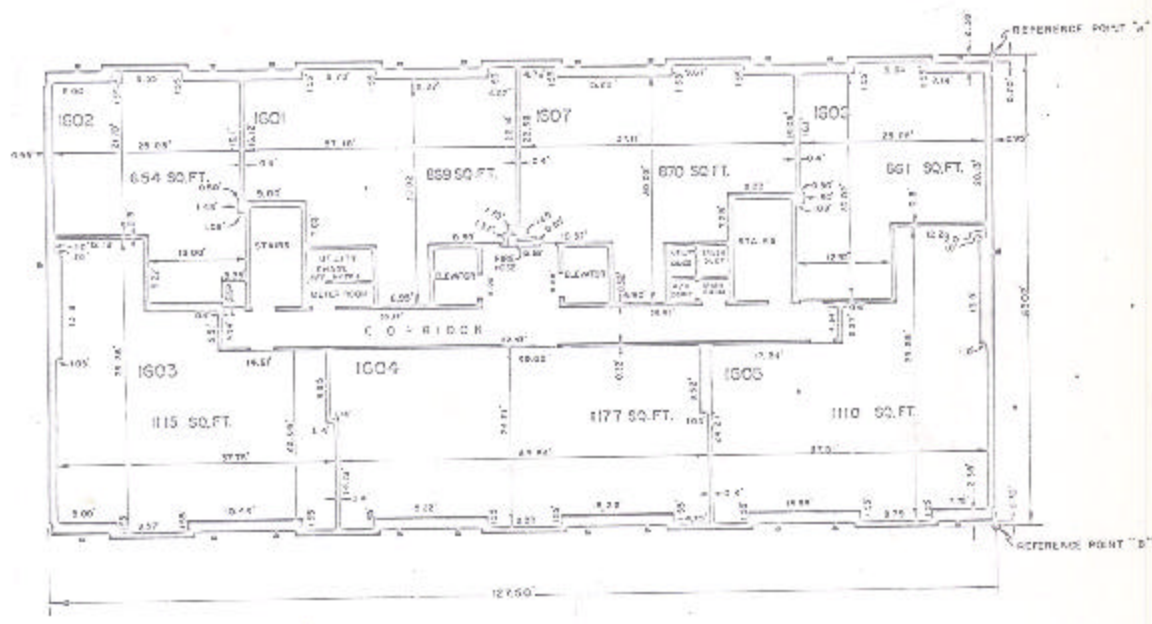


ASSESSOR'S BLOCK BOOK FOR HARRIS COUNTY, TEXAS

BLDG. EAST WEST Common Land  
 Abstract No. 281,380 Survey or Addition The SUSSEX Condominium Plat No. 78-403 S. D. 0' Village  
 Description 4/28/76, C. Erskine A 257; C. McKenney S. 4-260, R/S. P. Bl. 26 Eneptown Ind. Pl. Sec. 11 and 23 and 24; 1/5 Plat. 94.12 Warehouse and Frame Bldg. 3 and 52. 197-13.

CONV. REC. vol. 78 pg. 1			P A T E N T			C E R T I F I C A T E				
No.	Vol.	TO WHOM ISSUED	DATE			ACREAGE	No.	CLASS	CHARACTER	TO WHOM ISSUED
			M.	D.	Y.					

Scale N.T.S. = one inch  
 SUSSEX APTS., ETAL. 973  
 SUSSEX TOWERS, VC.



BUILDING E  
 PLAN OF 16th FLOOR  
 EAST BUILDING

Unless otherwise indicated  
 Common Elements and Common  
 Land are assessed in the  
 total of the land and  
 improvements.