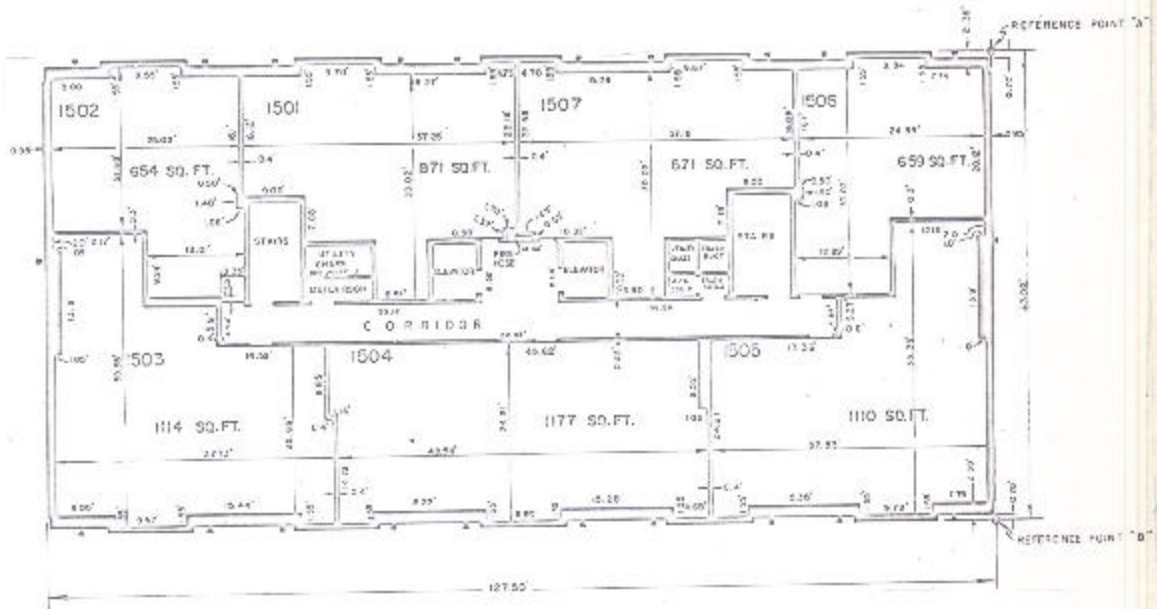


## ASSESSOR'S BLOCK BOOK FOR HARRIS COUNTY, TEXAS

BLDG. EAST, WEST Corner Land  
 Abstract No. 282,960 Survey or Addition The SUSSEX Condominium Plat No. 78-403 S. D. 01 Village  
 Description: 4.007 ac. S. 21st St. A-252; C. McKenzie Sur A-500; R/S Pl. Sk. 26 Skaptown Ind Pl. Sec. 11 vol 93 pg 6; R/S Pl. 1st 13th West Industrial Farm Sec. 3 vol 92 pg 7, 13.

COND. REC. vol. 78 pg.		P A T E N T			C E R T I F I C A T E				
No.	Vol.	TO WHOM ISSUED	DATE			No.	CLASS	CHARACTER	TO WHOM ISSUED
			M	D	Y				

Scale N.T.S. = nine inch.  
 SUSSEX AP'S., LTD., 1978  
 SUSSEX TOWERS, INC.



BUILDING E  
 PLAN OF 15th FLOOR  
 EAST BUILDING

Unless otherwise indicated  
 Common Elements and Common  
 Land are appurtenant to the  
 total of the land and  
 improvements.