

ASSESSOR'S BLOCK BOOK FOR HARRIS COUNTY, TEXAS

VOL. 88 (NO. 54-702)

Block or Abstract No. 26, 27, 43, 181-186
 Survey of Addition WESTBURY SEC. 5

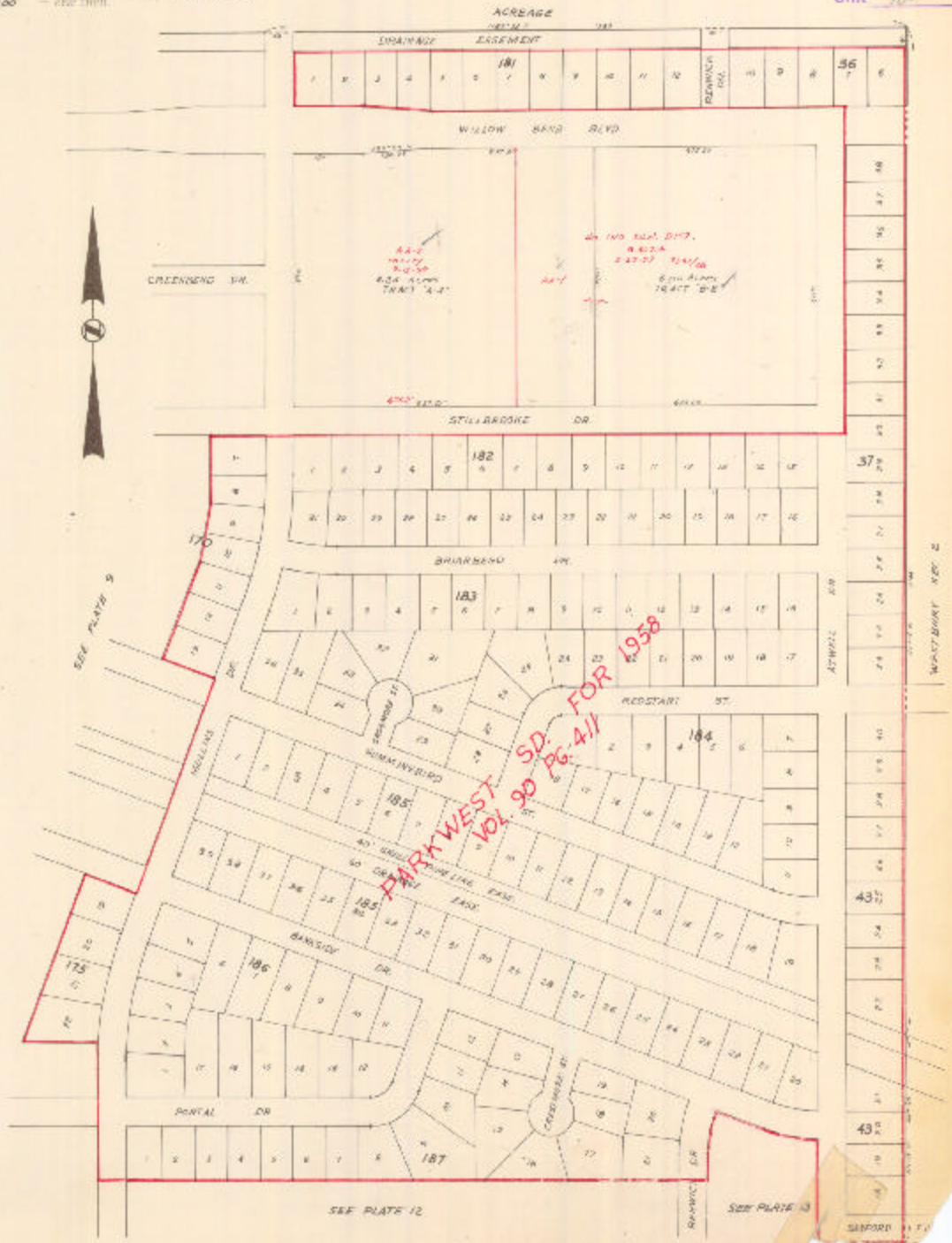
Pat. No. S. D. Village

Description

No.	Vol.	TO WHOM ISSUED	DATE		AL. BEAC.	No.	CLASS	CERTIFICATE CHARACTER
			M.	D.				
								Revalued 19 <u>61</u>

Scale 200 = one inch. **PLATE II of 14**

Unit 182-3



DARK WEST S.D. FOR 1958
 VOL. 90 PG. 411