

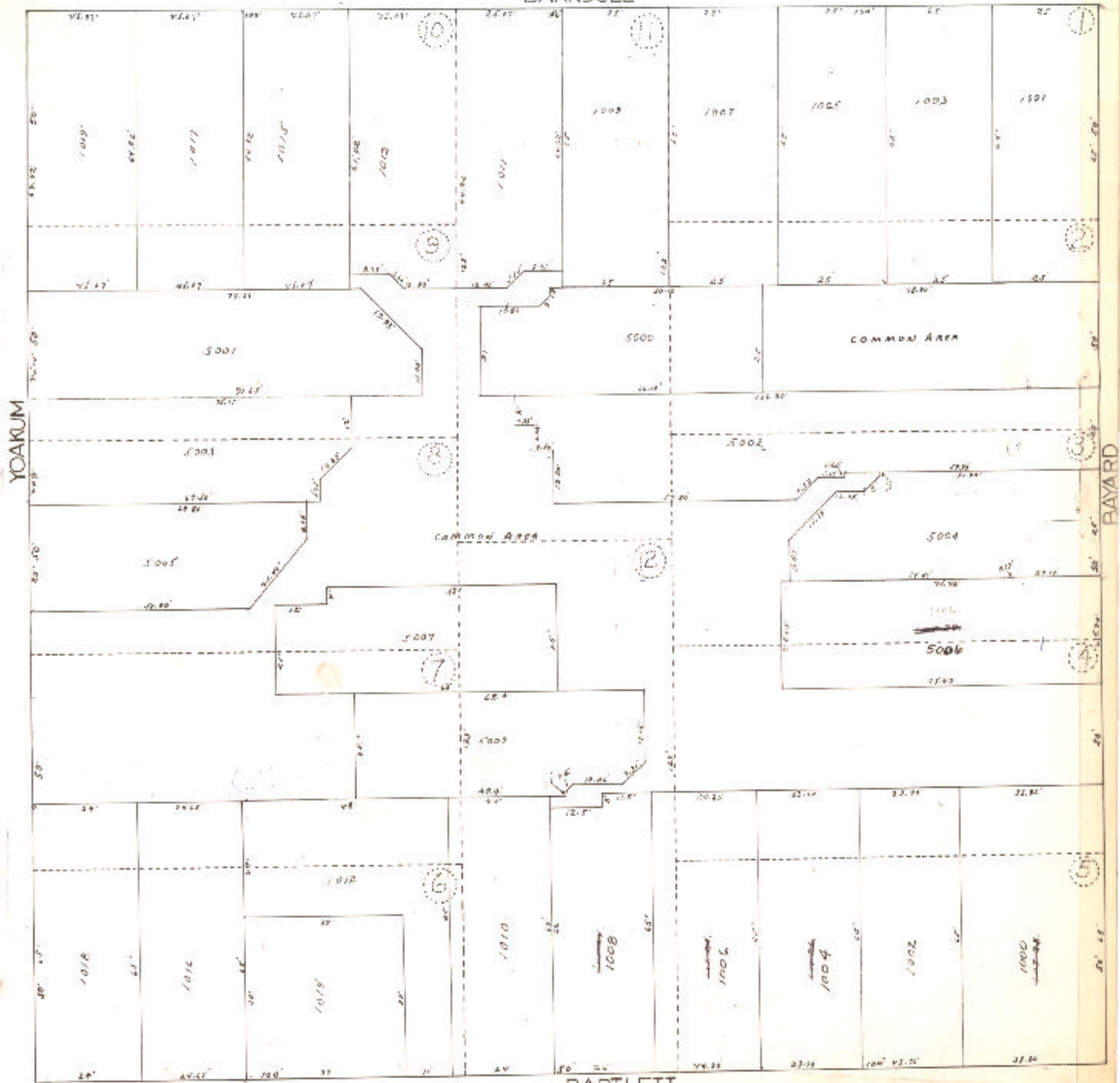
ASSESSOR'S BLOCK BOOK FOR HARRIS COUNTY, TEXAS

Block or 19
 Abstract No. 625 Survey or Addition WARWICK SQUARE TOWNHOUSES
 Description: 1.4326, Bk. 19, Turner Addition
 Phase 1, 11/17/18
 Plat No. S. D. Village

PATENT					CERTIFICATE				
No.	Vol.	TO WHOM ISSUED	DATE			ACREAGE	CLASS	CHARACTER	TO WHOM ISSUED
			M	D	Y				

Scale 20' = one inch.

BARKDULL



BARTLETT