

Vol. 4-156

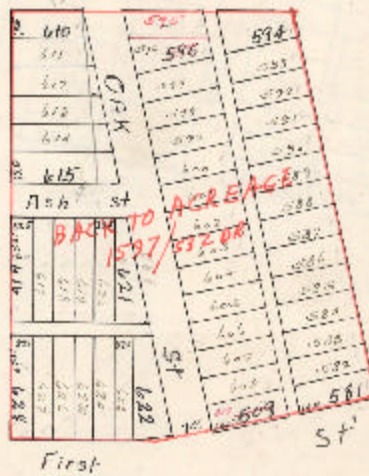
Block No. LOTS 581 to 628 - TOWN OF ALDINE

Subdivision
Addition

Survey
City or Town

ALDINE
S. D. 38
Plat No. B. D. 7

Scale 200 - one inch.



In the above plat the block lines are black numbers show the original block and lot lines and be numbers as designated by the recorded title. The RED LINES and RED NUMBERS indicate, respectively, the tract boundaries and tract numbers when said tract boundaries do not conform to the original lot lines. Red numbers show or part of land owned by the above block is considered a tract and, except as otherwise noted, is not a subdivision under the 1907 V.T.C.S. and TRACT NUMBERS are the same.

Subdivisions of blocks are shown below, as shown on above plat, were made in the original plat specified, later amendments thereto for said plat, or in preceding plat, and have been by said subdivisions were shown on above

Tract No.	subdivided in 18	into tracts Nos.	Tract No.	subdivided in 19	into tracts Nos.
Tract No.	subdivided in 19	into tracts Nos.	Tract No.	subdivided in 19	into tracts Nos.
Tract No.	subdivided in 19	into tracts Nos.	Tract No.	subdivided in 19	into tracts Nos.
Tract No.	in 19	into tracts Nos.	Tract No.	subdivided in 19	into tracts Nos.
Tract No.	in 19	into tracts Nos.	Tract No.	subdivided in 19	into tracts Nos.