

WILLIAM ERIST SURVEY
ABSTRACT NO. 782

Survey or Addition: **RAMPART SHOPPING CENTER** Plat No. 98-479 S.D. 01 Volage

Description: (1.5955 AC) PARTIAL REPLAT LOT 3 BLOCK 2 2ND SUBDIVISION WESTMORELAND FARMS (VOL. 37 PG. 61 SUB. 2)

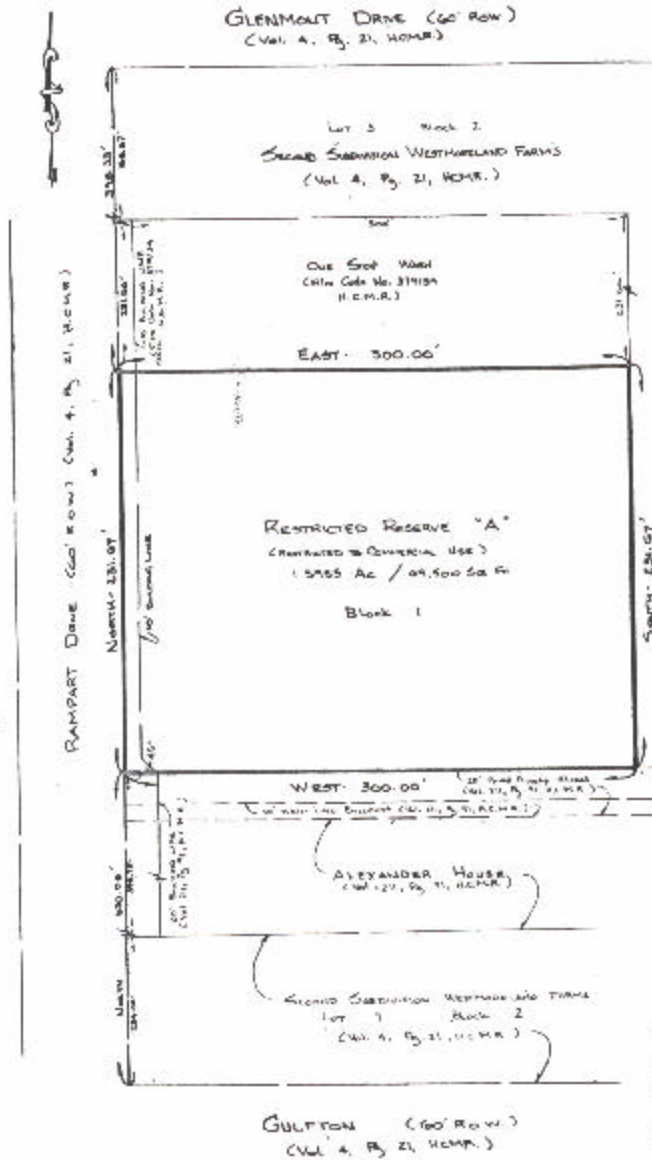
PATENT					CERTIFICATE				
No.	Vol.	TO WHOM ISSUED	DATE			No.	CLASS	CHARACTER	TO WHOM ISSUED
			M	D	Y				

SCALE 60' = ONE INCH

OWNER:
MDS, LTD., a Texas General Partnership
by its General Partner,
RAMPART SHOPPING CENTER, INC.



Second Subdivision Westmoreland Farms
 (Vol. 4, Pg. 21, H.C.M.R.)
 Block 2
 Lot 2



Original Address
 Sec. 1
 (Vol. 106, Pg. 14, Volume)

REASON FOR RECALL: TO CREATE RESTRICTED RESERVE W/ RESTRICTIONS TO COMPLETION.

NOTE: THIS PLAN IS NOT FILED TO THE OFFICE OF THE CLERK OF COURTS IN HARRIS COUNTY TEXAS. THE CITY CLERK HAS REVIEWED THIS PLAN AND FOUND IT TO BE IN ACCORDANCE WITH THE FACTS OF THIS PROJECT IN ACCORDANCE WITH THE CITY CLERK'S OFFICE.

NOTE: THIS PLAN WAS PREPARED FROM A SURVEY MADE BY THE LAND SURVEYING, INC. ON 10/28/2008 & AMENDED BY R. F. K. ON 11/20/08