

NEL GRAY SURVEY
 ABSTRACT NO. 284
 JAMES REFUGING SURVEY
 ABSTRACT NO. 162

ASSESSOR'S BLOCK BOOK FOR HARRIS COUNTY, TEXAS

Survey or Addition PIN OAK APARTMENTS Plat No. 97-532 S.D. 01 Village
 Description: (10.1449 ACRES) PIN OAK SECTION 3 (VOL. 118 PG. 144 SUB 1)

PATENT						CERTIFICATE			
No.	Vol.	TO WHOM ISSUED	DATE			No.	CLASS	CHARACTER	TO WHOM ISSUED
			M	D	Y				

SCALE 100' = ONE INCH
 OWNER:
 NRI PIN OAK LIMITED PARTNERSHIP



UNDEVELOPED PROPERTY 70'
 PIN OAK SECTION ONE
 SURVEY PARTIAL REFLECT
 P.C. NO. 34499 11-24-82

PIN OAK PLACE

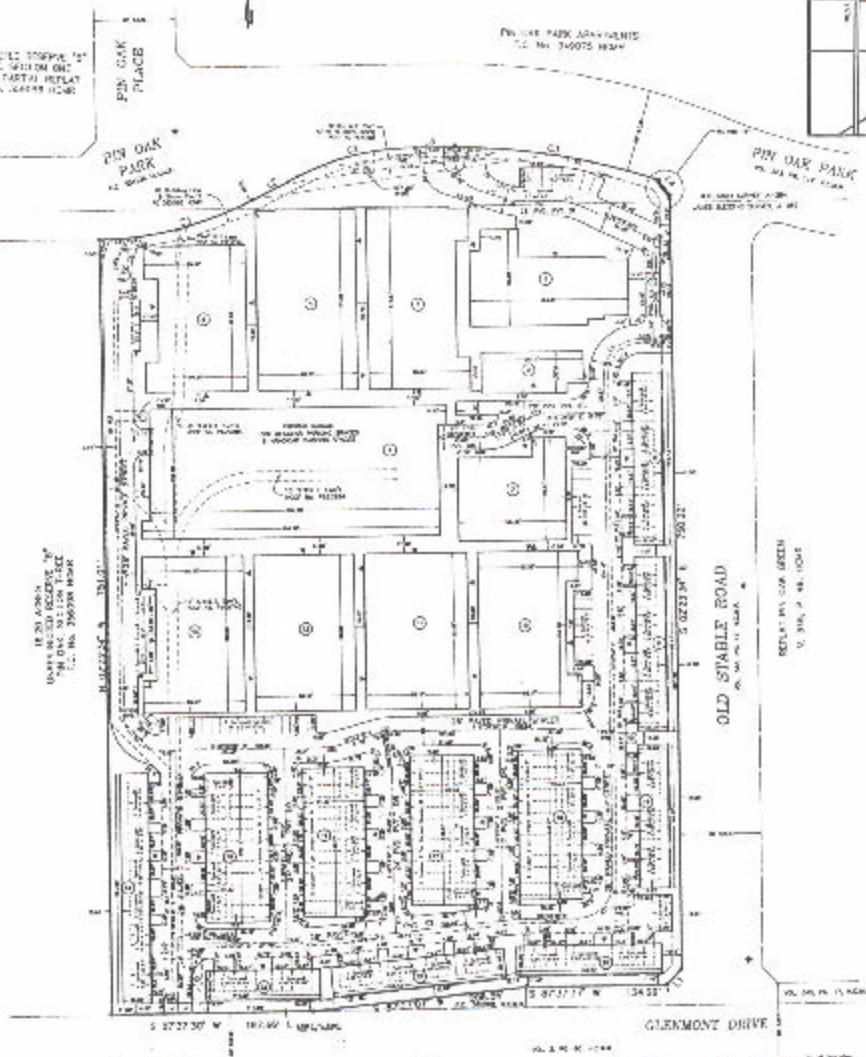
PIN OAK PARK
 74 100' 0" 100'

PIN OAK PARK APARTMENTS
 U.C. NO. 246075 1987

PIN OAK PARK
 74 100' 0" 100'

18.20 ACRES
 UNDEVELOPED PROPERTY BY
 SURVEY PARTIAL REFLECT
 P.C. NO. 346338 11-24-82

REFLECT BY CAR GREEN
 U.C. NO. 246 11-24-82



S 07°22'30" W 187.40' 1. 187.40'

GLENMONT DRIVE

WESTMORELAND TRAILS
 APARTMENTS 1967 SURRENDER
 VOL. 5, P. 11, H.C.M.P.

TRUCKEE PLAZA
 P.L. 27, 76, 72, H.C.M.P.

LINE DATA

LINE NO.	START STATION	END STATION	DESCRIPTION
1	0+00	0+00	START OF CURVE
1	0+00	0+05	5' TANGENT
1	0+05	0+10	10' CURVE
1	0+10	0+15	5' TANGENT
1	0+15	0+20	10' CURVE
1	0+20	0+25	5' TANGENT
1	0+25	0+30	10' CURVE
1	0+30	0+35	5' TANGENT
1	0+35	0+40	10' CURVE
1	0+40	0+45	5' TANGENT
1	0+45	0+50	10' CURVE
1	0+50	0+55	5' TANGENT
1	0+55	0+60	10' CURVE
1	0+60	0+65	5' TANGENT
1	0+65	0+70	10' CURVE
1	0+70	0+75	5' TANGENT
1	0+75	0+80	10' CURVE
1	0+80	0+85	5' TANGENT
1	0+85	0+90	10' CURVE
1	0+90	0+95	5' TANGENT
1	0+95	1+00	10' CURVE
1	1+00	1+00	END OF CURVE

CURVE DATA

STATION	CHORD BEARING	CHORD DISTANCE	TANGENT BEARING	TANGENT DISTANCE	CURVE BEARING	CURVE DISTANCE	CHORD DISTANCE	CHORD BEARING
0+00	N 0° 00' 00" E	0.00	N 0° 00' 00" E	0.00	N 0° 00' 00" E	0.00	0.00	N 0° 00' 00" E
0+05	N 89° 59' 59" E	5.00	N 89° 59' 59" E	5.00	N 89° 59' 59" E	5.00	5.00	N 89° 59' 59" E
0+10	N 89° 59' 58" E	9.98	N 89° 59' 58" E	9.98	N 89° 59' 58" E	9.98	9.98	N 89° 59' 58" E
0+15	N 89° 59' 56" E	14.93	N 89° 59' 56" E	14.93	N 89° 59' 56" E	14.93	14.93	N 89° 59' 56" E
0+20	N 89° 59' 52" E	19.84	N 89° 59' 52" E	19.84	N 89° 59' 52" E	19.84	19.84	N 89° 59' 52" E
0+25	N 89° 59' 46" E	24.71	N 89° 59' 46" E	24.71	N 89° 59' 46" E	24.71	24.71	N 89° 59' 46" E
0+30	N 89° 59' 38" E	29.54	N 89° 59' 38" E	29.54	N 89° 59' 38" E	29.54	29.54	N 89° 59' 38" E
0+35	N 89° 59' 28" E	34.33	N 89° 59' 28" E	34.33	N 89° 59' 28" E	34.33	34.33	N 89° 59' 28" E
0+40	N 89° 59' 16" E	39.08	N 89° 59' 16" E	39.08	N 89° 59' 16" E	39.08	39.08	N 89° 59' 16" E
0+45	N 89° 59' 02" E	43.79	N 89° 59' 02" E	43.79	N 89° 59' 02" E	43.79	43.79	N 89° 59' 02" E
0+50	N 89° 58' 46" E	48.46	N 89° 58' 46" E	48.46	N 89° 58' 46" E	48.46	48.46	N 89° 58' 46" E
0+55	N 89° 58' 28" E	53.10	N 89° 58' 28" E	53.10	N 89° 58' 28" E	53.10	53.10	N 89° 58' 28" E
0+60	N 89° 58' 08" E	57.71	N 89° 58' 08" E	57.71	N 89° 58' 08" E	57.71	57.71	N 89° 58' 08" E
0+65	N 89° 57' 46" E	62.29	N 89° 57' 46" E	62.29	N 89° 57' 46" E	62.29	62.29	N 89° 57' 46" E
0+70	N 89° 57' 22" E	66.84	N 89° 57' 22" E	66.84	N 89° 57' 22" E	66.84	66.84	N 89° 57' 22" E
0+75	N 89° 56' 56" E	71.37	N 89° 56' 56" E	71.37	N 89° 56' 56" E	71.37	71.37	N 89° 56' 56" E
0+80	N 89° 56' 28" E	75.87	N 89° 56' 28" E	75.87	N 89° 56' 28" E	75.87	75.87	N 89° 56' 28" E
0+85	N 89° 55' 58" E	80.35	N 89° 55' 58" E	80.35	N 89° 55' 58" E	80.35	80.35	N 89° 55' 58" E
0+90	N 89° 55' 26" E	84.80	N 89° 55' 26" E	84.80	N 89° 55' 26" E	84.80	84.80	N 89° 55' 26" E
0+95	N 89° 54' 52" E	89.23	N 89° 54' 52" E	89.23	N 89° 54' 52" E	89.23	89.23	N 89° 54' 52" E
1+00	N 89° 54' 16" E	93.64	N 89° 54' 16" E	93.64	N 89° 54' 16" E	93.64	93.64	N 89° 54' 16" E