

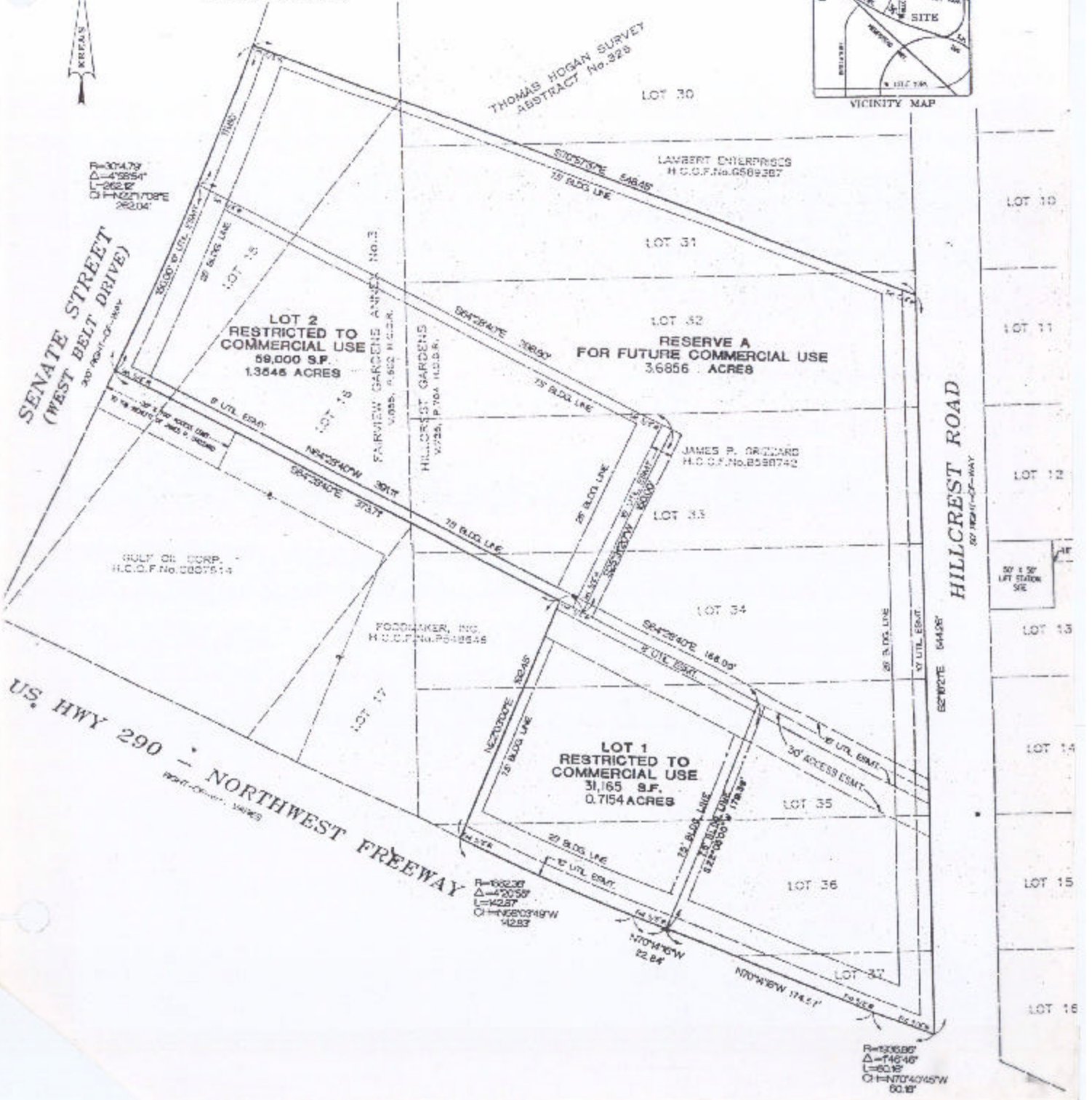
HGD-1

ASSESSOR'S BLOCK BOOK FOR HARRIS COUNTY, TEXAS

THOMAS HOGAN SURVEY ABSTRACT No. 225 Survey or Addition: **JERSEY VILLAGE MEINEKE** Plat No. 96., 244., S.D. 04., Village Description: 5.7555 ACRES PART R/P HILLCREST GARDENS & FAIRVIEW GARDENS ( VOL. 64 PG. 27 & VOL. 64 PG. 248 )

PATENT					CERTIFICATE				
No.	Vol.	TO WHOM ISSUED	DATE			Ac.	CLASS	CHARACTER	TO WHOM ISSUED
			M	D	Y				

SCALE 60' = ONE INCH  
 OWNER:  
 KENNEDY FAMILY PARTNERSHIP  
 & GIZZARD PARTNERSHIP, LTD.



R=304.79  
 Δ=4°59'54"  
 L=262.12'  
 CH=142°10'08"  
 262.04'

R=1000.00'  
 Δ=74°46'  
 L=60.18'  
 CH=170°40'15"W  
 60.18'

U.S. HWY 290 - NORTHWEST FREEWAY

HILLCREST ROAD

SENATE STREET  
 (WEST BELT DRIVE)

LOT 2  
 RESTRICTED TO  
 COMMERCIAL USE  
 59,000 S.F.  
 1.3648 ACRES

RESERVE A  
 FOR FUTURE COMMERCIAL USE  
 3.6856 ACRES

LOT 1  
 RESTRICTED TO  
 COMMERCIAL USE  
 31,165 S.F.  
 0.7154 ACRES