

JOEL WHEATON SURVEY
RESUBTRACT No. 90

Survey or Addition LAKES OF PARKWAY SEC THREE

Description: 69.110 ACRES JOEL WHEATON SURVEY (VOL. 41 PG 36)

Plat No. 96-205 S.D. 04 Village

PATENT

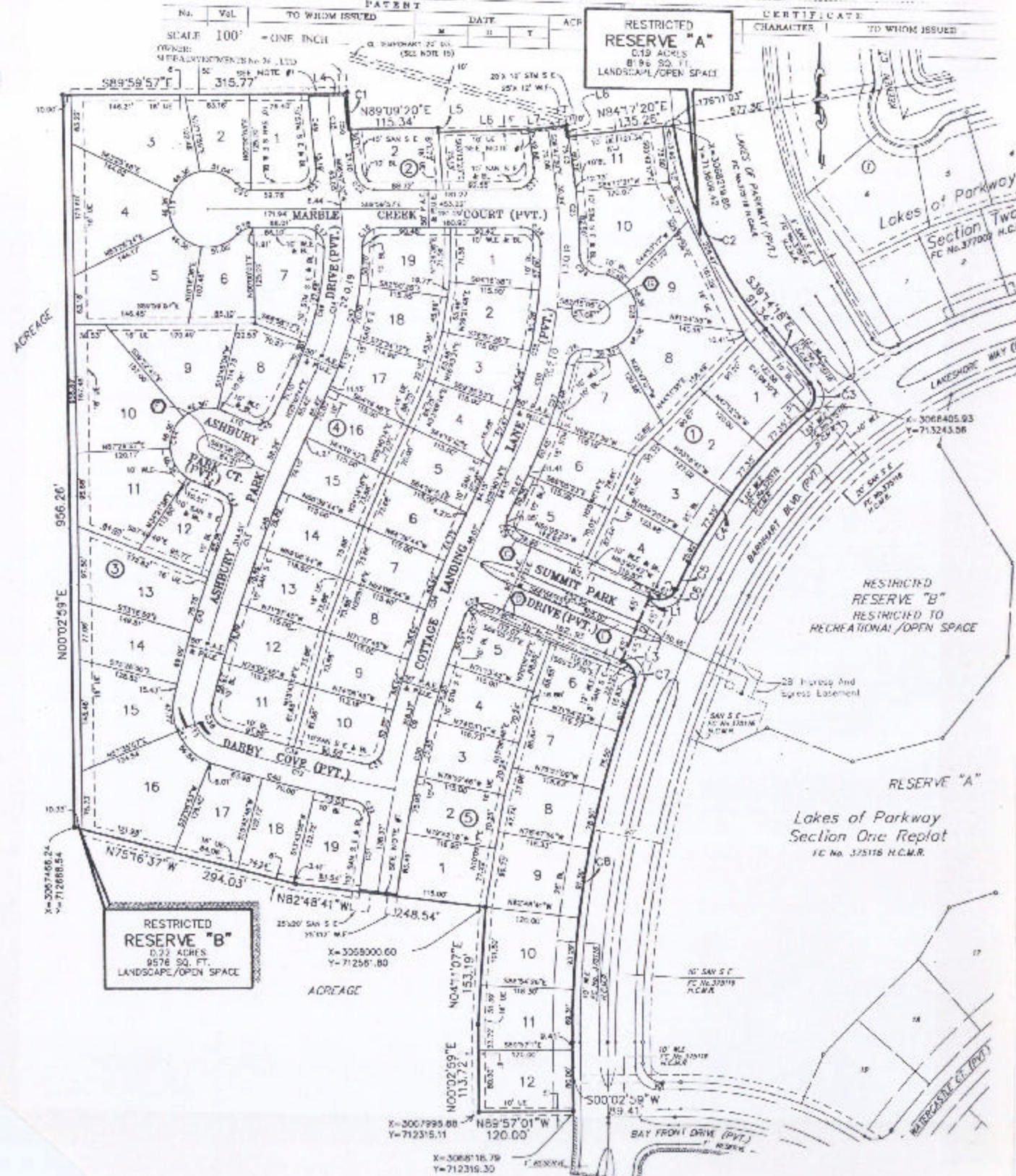
SCALE 100' = ONE INCH

OWNER: METAL INVESTMENTS No. 36, L.L.C.

315.77

RESTRICTED RESERVE "A"
0.19 ACRES
8,96 SQ. FT.
LANDSCAPE/OPEN SPACE

CERTIFICATE CHARACTER TO WHOM ISSUED



ACREAGE

N00°02'59"E 906.20'

X=3007466.24
Y=712688.54

RESTRICTED RESERVE "B"
0.21 ACRES
9,576 SQ. FT.
LANDSCAPE/OPEN SPACE

ACREAGE

X=3059000.60
Y=712581.80

X=3007995.88
Y=712315.11

X=3068116.79
Y=712316.30

RESTRICTED RESERVE "B"
RESTRICTED TO RECREATIONAL/OPEN SPACE

RESERVE "A"
Lakes of Parkway
Section One Replat
FC No. 375116 H.C.M.R.

FC No. 370119 H.C.M.R.

FC No. 370119 H.C.M.R.