

JOEL WHEATON SURVEY
ABSTRACT NO. 30

Survey or Addition **LAKES OF PARKWAY SEC. TWO**

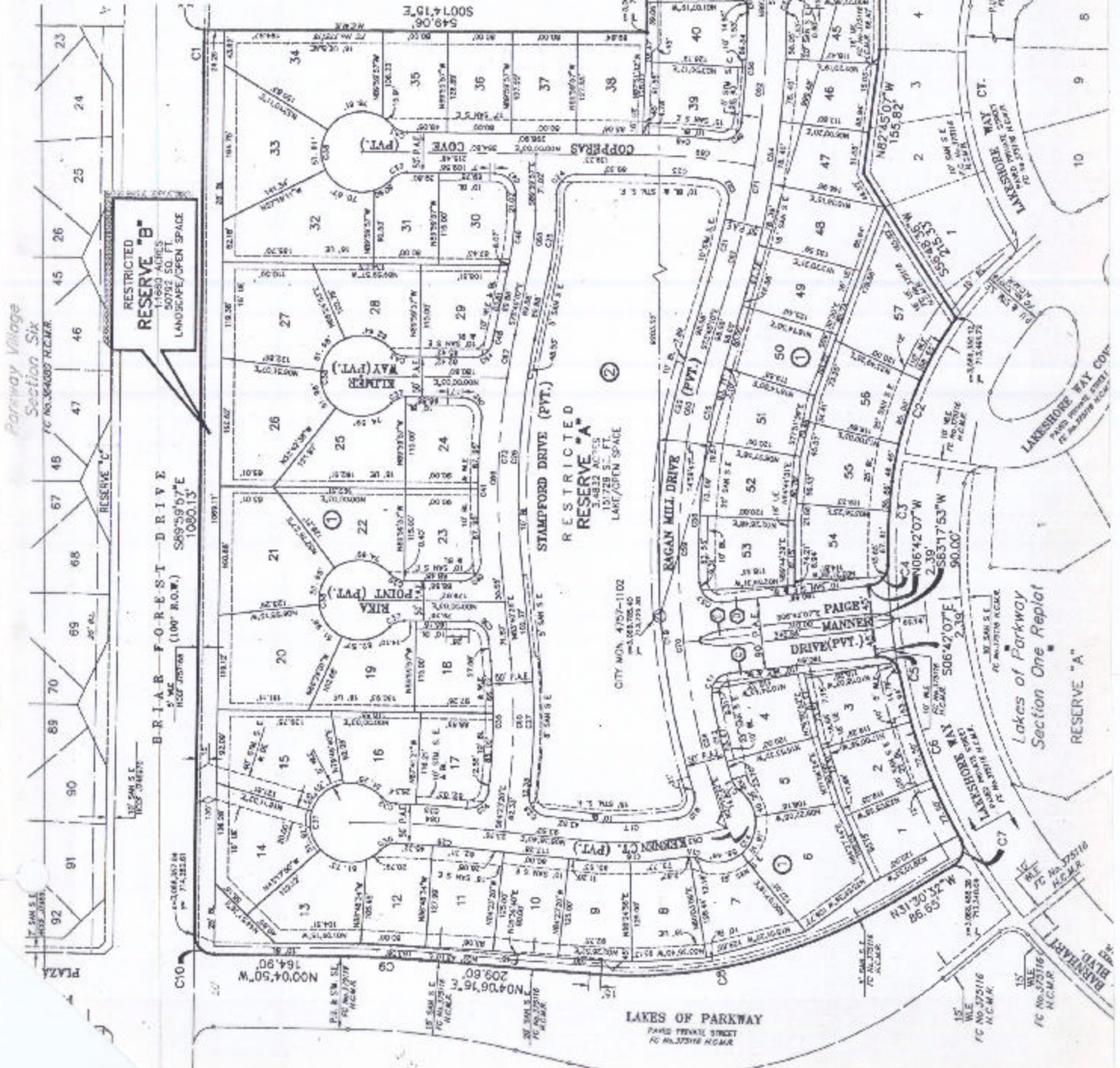
Plat No. 96-137 S.D. 01 Village

Description: 24.99 ACRES JOEL WHEATON SURVEY (VOL. 41 PG. 36)

3,500.00
296.58
CERTIFICATE

No.	Vol.	TO WHOM ISSUED	DATE	TO WHOM ISSUED

Scale 100' = one inch
OWNER:
ALPHA INVESTMENTS NO. 26 LTD.



RESTRICTED RESERVE "B"
1,660 ACRES
50792 SQ. FT.
LANDSCAPE/OPEN SPACE

RESTRICTED RESERVE "A"
13,773 SQ. FT.
LAKE/OPEN SPACE

Lakes of Parkway
Section One Replat
RESERVE "A"

LAKES OF PARKWAY
PAVED PRIVATE STREET
FC NO. 27516 H.C.M.R.