

ASSESSOR'S BLOCK BOOK FOR HARRIS COUNTY, TEXAS
LAKES ON ELDRIDGE SEC. ELEVEN REPLAT

W.C. RR. CO. SURVEY
ABSTRACT No. 921

Survey or Addition

Pat. No. 96, 340 S.D. 04 Village

Description: 12,524 ACRES LAKES ON ELDRIDGE SEC. ELEVEN (VOL. 118 PG. 683)

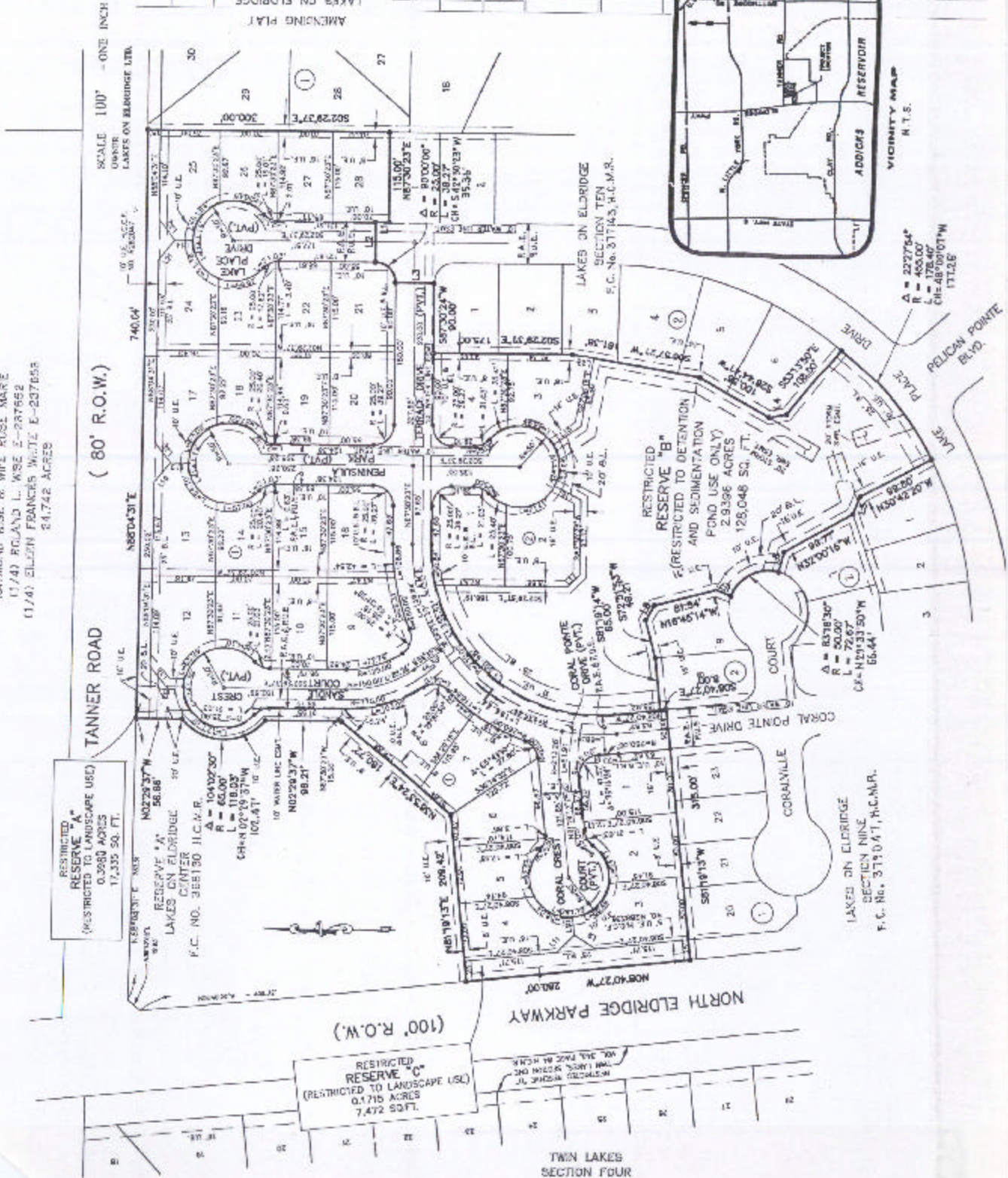
No.	Vol.	DATE	ACREAGE	No.
PATENT				
LAKES ON ELDRIDGE SECTION TWO				

RAYMOND WISE & WIFE ROSE MARE
 (174) ROLAND L. WISE E-287652
 (174) ELLEN FRANCES WHITE E-237653
 24.742 ACRES

RESTRICTED RESERVE "A"
 (RESTRICTED TO LANDSCAPE USE)
 0.2680 ACRES
 17,335 SQ. FT.

RESTRICTED RESERVE "C"
 (RESTRICTED TO LANDSCAPE USE)
 0.1715 ACRES
 7,472 SQ. FT.

LAKES ON ELDRIDGE SECTION NINE
 F.C. No. 3719.0.1, H.C.M.R.



A = 227764
 R = 400.00
 L = 100.00
 CH = 100.00

RESTRICTED RESERVE "B"
 (RESTRICTED TO DETENTION AND SEDIMENTATION POND USE ONLY)
 2,939.6 ACRES
 128,048 SQ. FT.

A = 831830
 R = 50.00
 L = 72.67
 CH = 121.33 SQ. FT.

A = 1040730
 R = 65.00
 L = 118.00
 CH = 107.79 SQ. FT.

A = 1040730
 R = 65.00
 L = 118.00
 CH = 107.79 SQ. FT.

A = 1040730
 R = 65.00
 L = 118.00
 CH = 107.79 SQ. FT.

A = 1040730
 R = 65.00
 L = 118.00
 CH = 107.79 SQ. FT.