

ASSESSOR'S BLOCK BOOK FOR HARRIS COUNTY, TEXAS

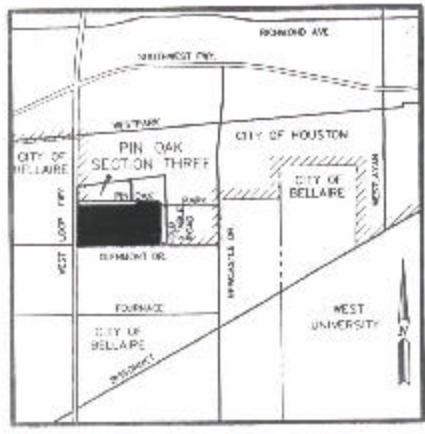
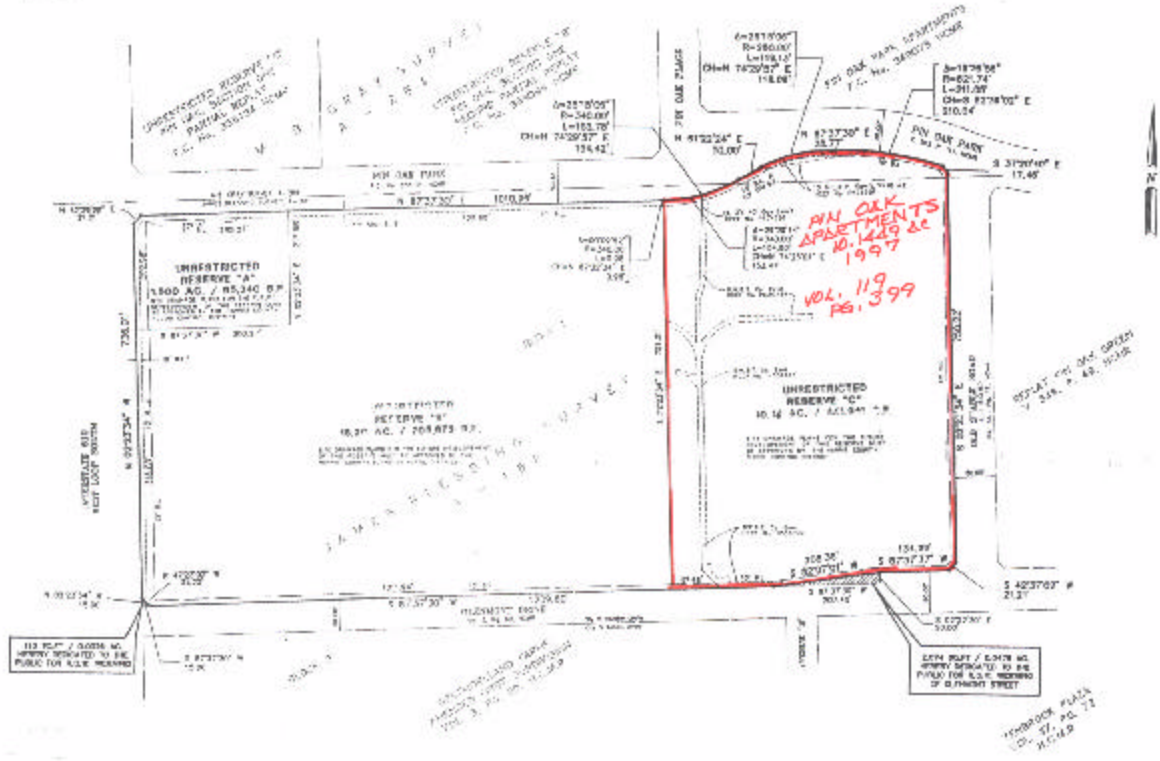
JAMES BLESSING SURVEY, A-182 AND M.B. GRAY SURVEY, A-284 Survey or Addition SECTION THREE Plat No. 95-62 S. D. 01 Village Description: 27.89 ACRES PARTIAL REPLAT OF PIN OAK, SECTION ONE AND A REPLAT OF PART OF WESTMORELAND FARMS ADJACENT FIRST SUBDIVISION VOL. 115, PG. 140

No.	Vol.	TO WHOM ISSUED	PATENT			ACRES	No.	CLASS	CHARACTER	TO WHOM ISSUED
			DATE	M	D					

Scale 1" = one inch.

REASON FOR REPLAT IS TO BE-SUBDIVIDE RESERVES AND LOTS.

OWNER: PIN OAK PARTNERS LIMITED.



VICINITY MAP N.T.S.