

ASSESSOR'S BLOCK BOOK FOR HARRIS COUNTY, TEXAS
FARNHAM PARK

HENRY WOODRUFF SURVEY,

Abstract No. A-844

Survey or Addition

APARTMENTS

Plat No. 95-18

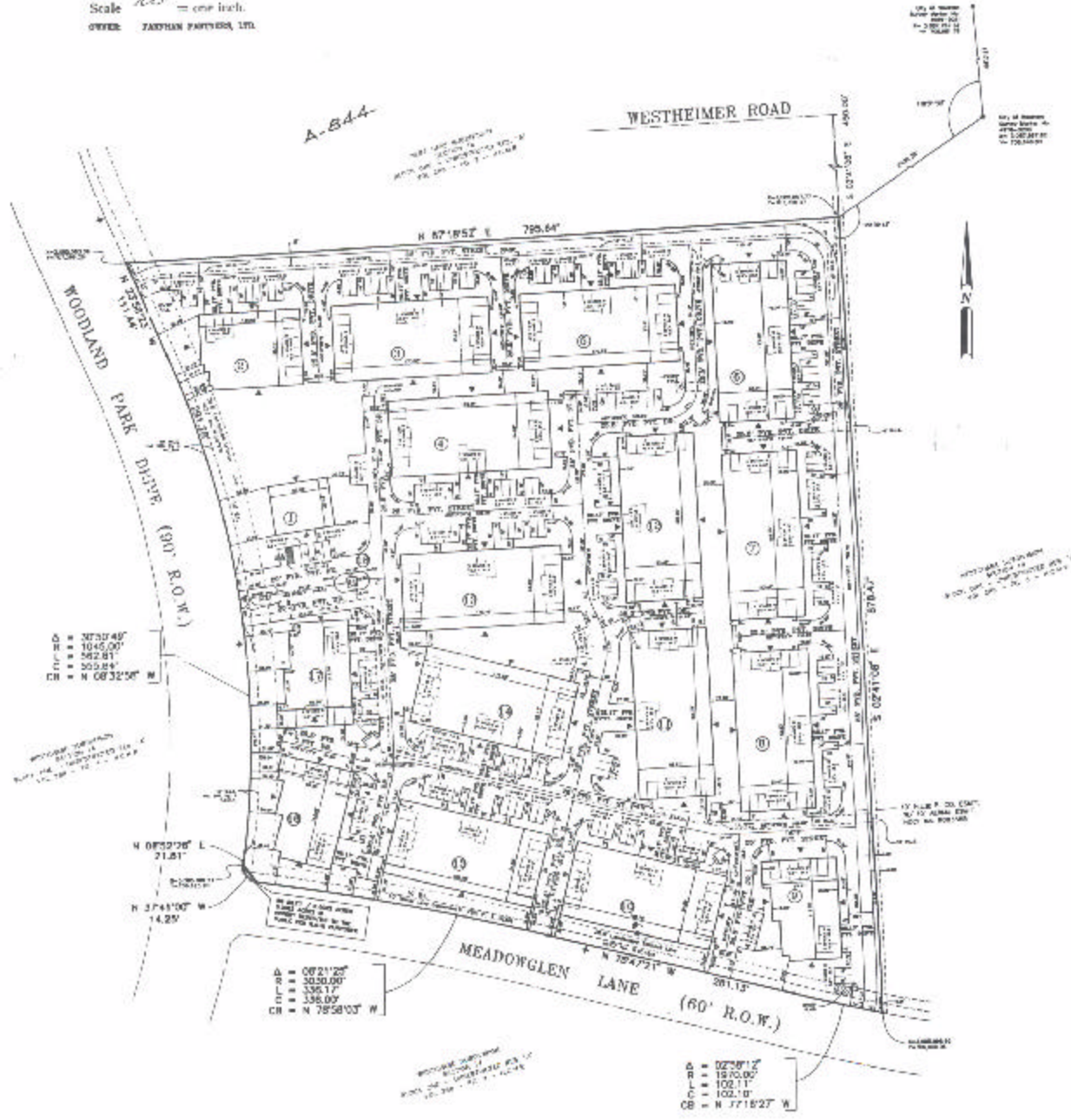
S. D. 08

Village

Description: 12.701 ACRES OF LAND OUT OF WESTCHASE SUBDIVISION, SECTION FOURTEEN, BLOCK ONE, UNRESTRICTED RESERVE "A", VOL. 114, PG. 411

PATENT					CERTIFICATE				
No.	Vol.	TO WHOM ISSUED	DATE			No.	CLASS	CHARACTER	TO WHOM ISSUED
			M	D	Y				

Scale 1/32" = one inch.
OWNER: FARNHAM PARTNERS, LTD.



- AD = 3739.45'
- AB = 1845.00'
- AC = 562.81'
- AE = 305.84'
- CB = N 08°32'58" W

- N 08°59'28" E 71.81'
- N 37°45'00" W 14.25'

- AD = 0821.20'
- AB = 3030.00'
- AC = 336.17'
- AE = 338.00'
- CB = N 79°58'03" W

- AD = 0259'17"
- AB = 1870.00'
- AC = 102.11'
- AE = 102.10'
- CB = N 77°18'27" W