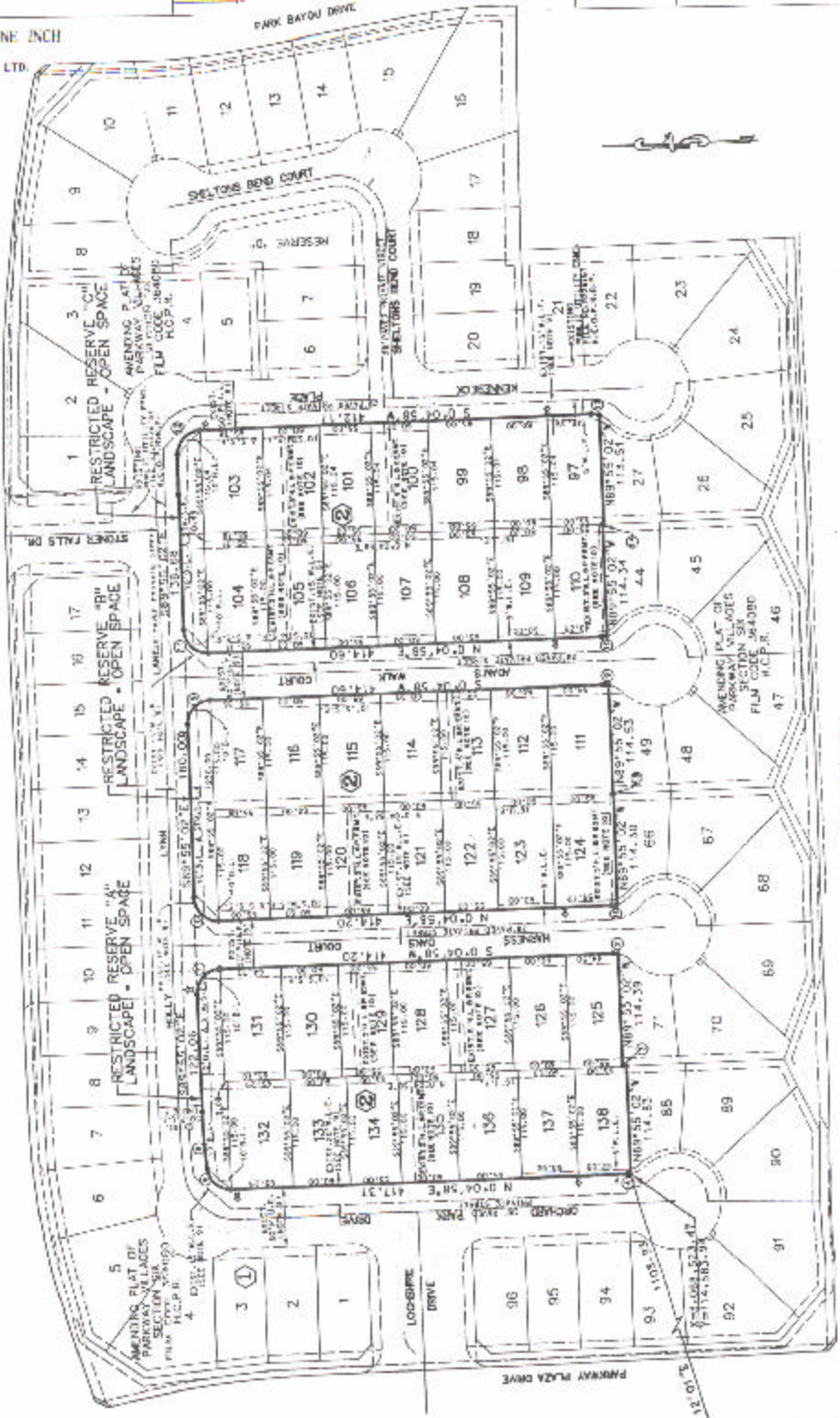
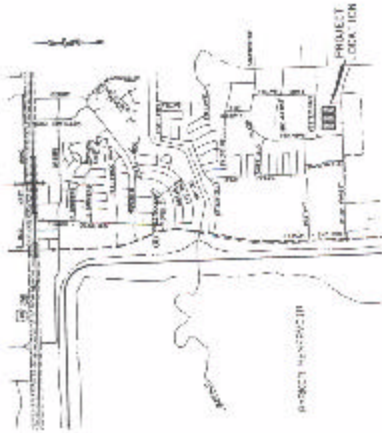


ASSESSOR'S BLOCK BOOK FOR HARRIS COUNTY, TEXAS  
PARKWAY VILLAGES SEC. SIX

JOEL WHEATON SURVEY  
ASS. PACT No. 80 Survey or Addition: PARTIAL REPLAT Plat No. 97-228 S. D. 01 Village  
Description: 7.0382 ACRES PARTIAL RL/LAT OF FIRST RECORDING (VOL. 118 PG. 295)

FACENT				CERTIFICATE			
No.	Vol.	TO WHOM ISSUED	DATE	No.	CLASS	CHARACTER	TO WHOM ISSUED

SCALE 100' = ONE INCH  
OWNER  
SIERRA INVESTMENTS, INC. 21 LTD.



BEAR FOREST DRIVE

WESTLOCH DRIVE

112.00' E

PARKWAY PLAZA DRIVE

LOOPSIDE DRIVE

SHELTON BLVD COURT

PARK BAYOU DRIVE

RESTRICTED RESERVE "A" LANDSCAPE - OPEN SPACE

RESTRICTED RESERVE "B" LANDSCAPE - OPEN SPACE

RESTRICTED RESERVE "A" LANDSCAPE - OPEN SPACE

AMENDING PLAT OF PROJECT VILLAGES SECTION SIX

RESTRICTED RESERVE "A" LANDSCAPE - OPEN SPACE

AMENDING PLAT OF PROJECT VILLAGES SECTION SIX

RESTRICTED RESERVE "A" LANDSCAPE - OPEN SPACE

RESTRICTED RESERVE "A" LANDSCAPE - OPEN SPACE