

HGD-1

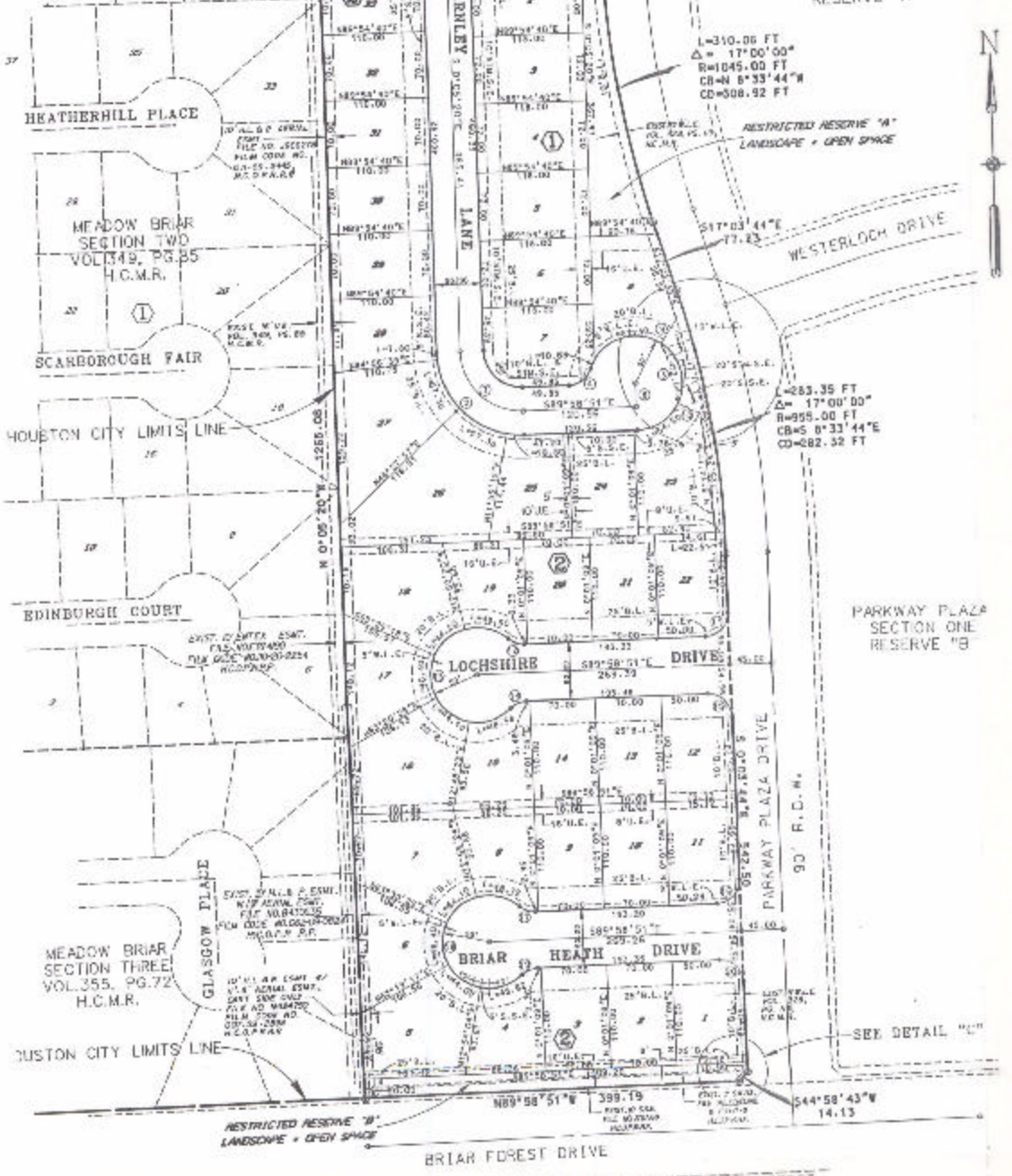
ASSESSOR'S BLOCK BOOK FOR HARRIS COUNTY, TEXAS
 PARKWAY VILLAGES
 SECTION FIVE

JOEL VENTRONE SURVEY, ABSTRACT 80 Addition: Plat No. 99-251 S. D. 21 Village:
 Description: 10.9238 ACRES PARTIAL REPEAT OF PARKWAY PLAZA TWO SECTION ONE, VOL. 116, PG. 175

PAT			CERTIFICATE		
No.	Vol.	TO WHOM ISSUED	CLASS	CHARACTER	STANDARD FOR REF. TO BE SHOWN
					UNRESTRICTED RESERVE "A" TO SINGLE PARTY ONLY

Scale 100' = one inch.

44 DIST. BY L.L. & SONS, INC. N 7/8 ACRES, 15.00 AC. FILE NO. 1042-10-1517 FROM CODE 1042-10-1517 H.C.M.R.



PARKWAY PLAZA SECTION ONE RESERVE "K"

L=310.06 FT
 $\Delta = 171^{\circ}00'00''$
 R=1045.00 FT
 CB=M 5°33'44"W
 CD=508.92 FT

RESTRICTED RESERVE "A"
 LANDSCAPE + OPEN SPACE

PARKWAY PLAZA SECTION ONE RESERVE "B"

L=283.35 FT
 $\Delta = 171^{\circ}00'00''$
 R=955.00 FT
 CB=M 5°33'44"E
 CD=482.32 FT

SEE DETAIL "C"

RESTRICTED RESERVE "A"
 LANDSCAPE + OPEN SPACE

BRIAR FOREST DRIVE