

ASSESSOR'S BLOCK BOOK FOR HARRIS COUNTY, TEXAS

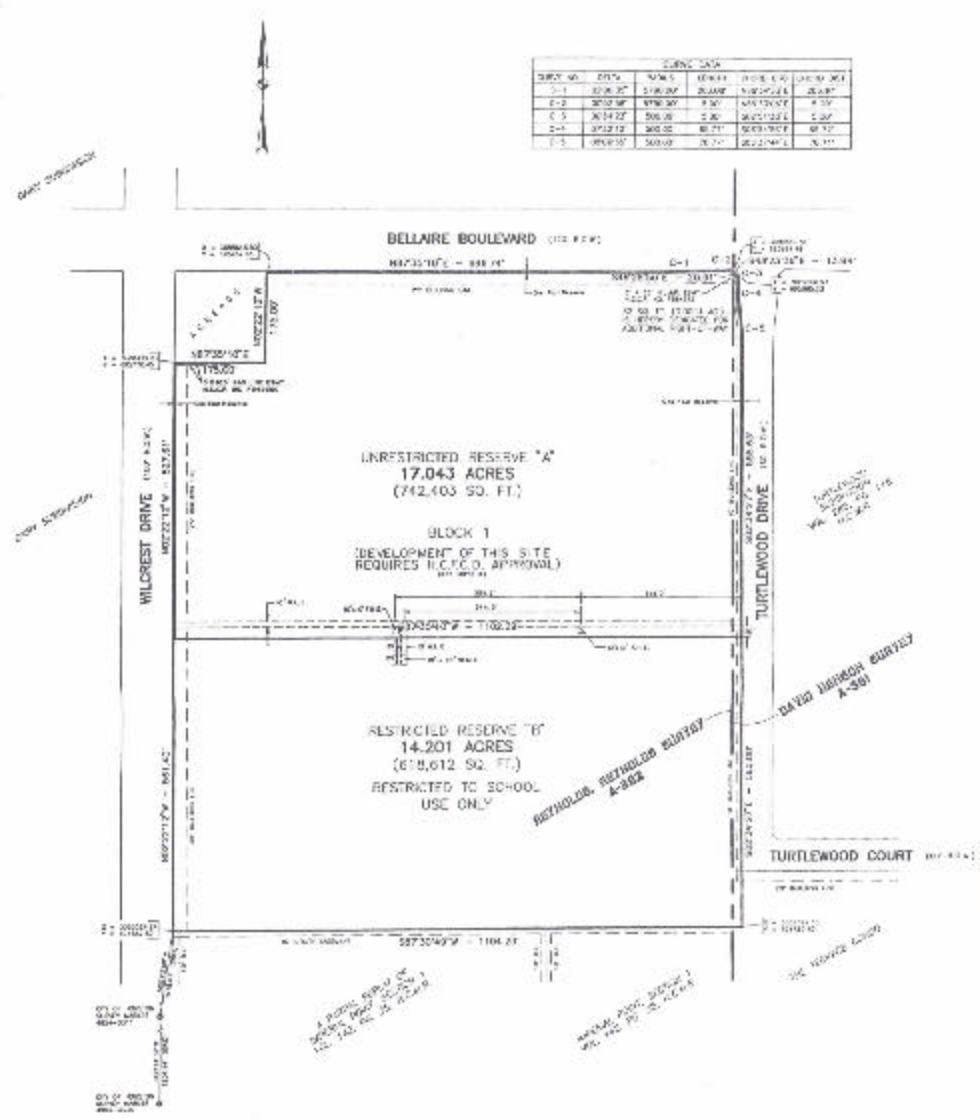
AND
 THE DAVID HANSON SURVEY,
 RES. SURV. NO. 381.

Surver or Addition: **L. C. OWENS SCHOOL SITE** Plat No. **93-243** S. D. **283** Village

Description: **31.246 ACRES** BEING A PARTIAL REPEAT OF LOT 113 IN THE DAIRY SUBDIVISION AND TOWN, VOL. 117, PG. 138

PATENT				CERTIFICATE				
No.	Vol.	TO WHOM ISSUED	DATE	ACREAGE	No.	CLASS	CHARACTER	TO WHOM ISSUED
			M	D				

Scale 200' = one inch.



CENSUS DATA							
TRACT NO.	CRS.	WMS	REGR.	POP. CO.	CHSD NO.		
1-1	200.27	200.27	200.27	200.27	200.27	200.27	200.27
1-2	200.27	200.27	200.27	200.27	200.27	200.27	200.27
1-3	200.27	200.27	200.27	200.27	200.27	200.27	200.27
1-4	200.27	200.27	200.27	200.27	200.27	200.27	200.27
1-5	200.27	200.27	200.27	200.27	200.27	200.27	200.27

UNRESTRICTED RESERVE "A"
17.043 ACRES
(712,403 SQ. FT.)

BLOCK 1
(DEVELOPMENT OF THIS SITE
REQUIRES H.C.F.C.O. APPROVAL)

RESTRICTED RESERVE "B"
14.201 ACRES
(618,612 SQ. FT.)
RESTRICTED TO SCHOOL
USE ONLY

REYNOLDS, REYNOLDS SURVEY
A-382

DAVID HANSON SURVEY
A-381

Handwritten note: A PORTION OF THIS SURVEY IS BEING RE-SURVEYED BY L. C. OWENS, SURV. NO. 382.

Handwritten note: ORIGINAL SURVEY BY T.H. REYNOLDS, SURV. NO. 652, VOL. 117, PG. 138.

Handwritten note: SEE REYNOLDS SURVEY