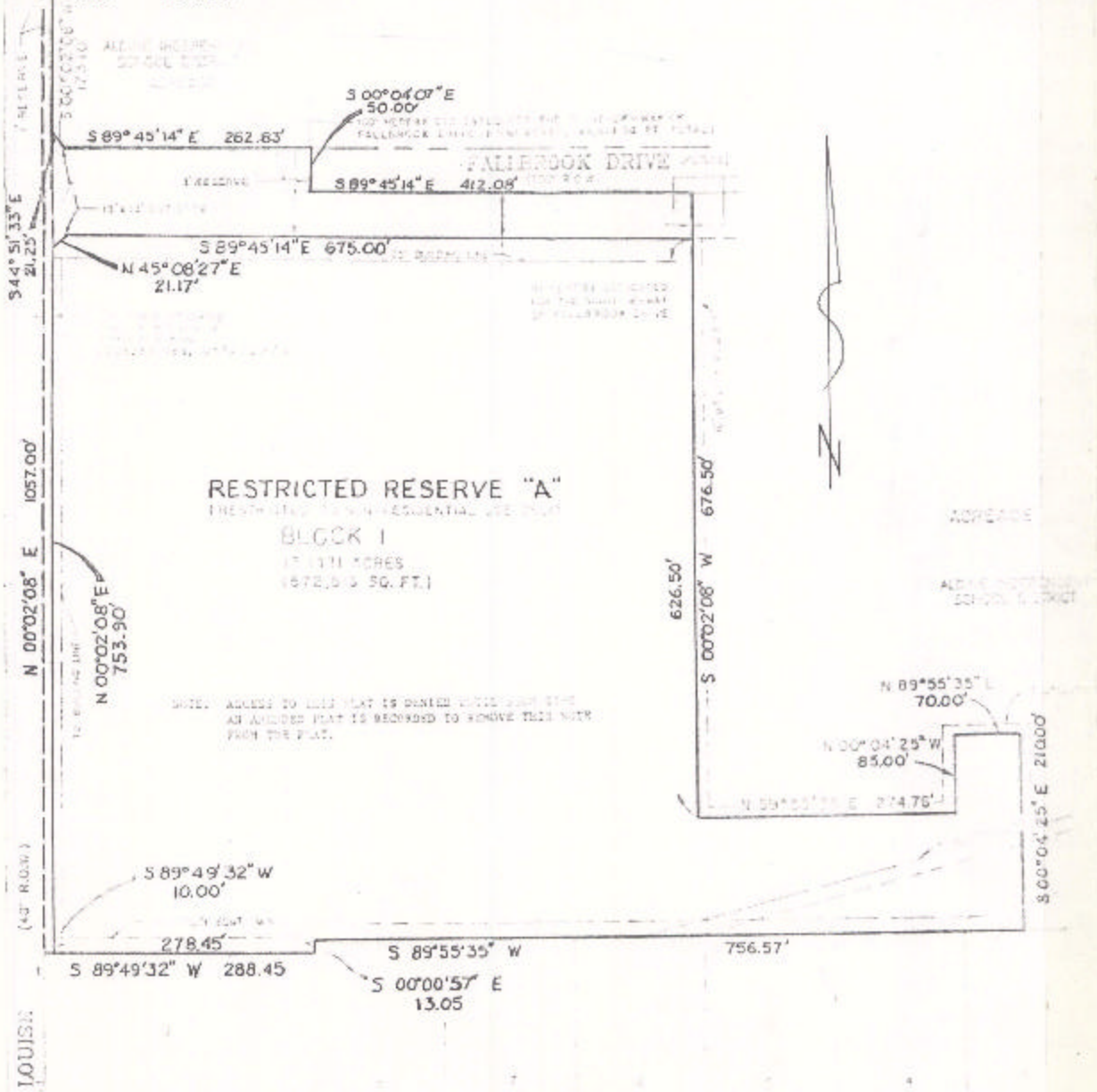


ASSESSOR'S BLOCK BOOK FOR HARRIS COUNTY, TEXAS

Block or Abstract No. 1643 ANN LOUISE FIFTH AND SIXTH GRADE  
Survey or Addition... SCHOOLS No. 2 Plat No. 92-151 S D. 09 Village  
Description: 14-5012 AC. HIGHLAND HOMES PLACE ANNEX VOL. 45, PG. 15 / H.H. REYNOLDS SEC. VOL. 41 PG. 126

PATENT				CERTIFICATE			
No.	Vol.	TO WHOM ISSUED	DATE	ACREAGE	No.	CLASS	TO WHOM ISSUED
			M D Y				

Scale = one inch.



RESTRICTED RESERVE "A"  
RESERVED FOR NON-RESIDENTIAL USE ONLY  
BLOCK 1  
17.111 ACRES  
(4672.53 SQ. FT.)

NOTE: ACCESS TO THIS PLAT IS DENIED WITHOUT THE  
AN ADJUDICATED PLAT IS RESERVED TO REMOVE THIS NOTE  
FROM THE PLAT.

HIGHLAND HOMES PLACE  
ANNEX

HARRIS COUNTY TEXAS