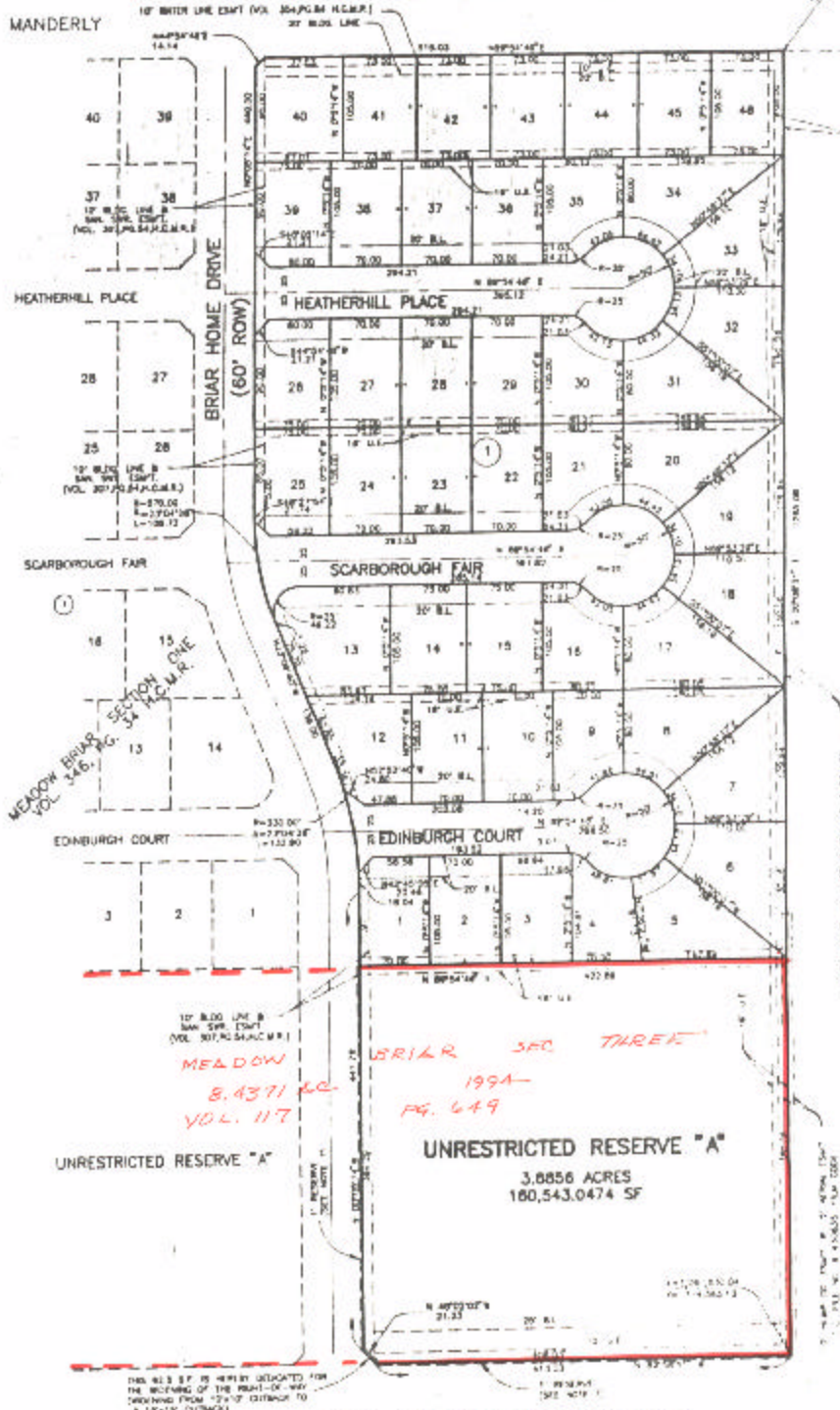


ASSESSOR'S BLOCK BOOK FOR HARRIS COUNTY, TEXAS

Block or Abstract No. 80 Survey or Addition MEADOW BRIAR SEC TWO Plat No. 41-157 S. D. 01 Village #3
Description: B. T. GARDNER, BRIAR, HARRIS SEC TWO VOL. 117 PG. 203

| Vol. | TO WHOM ISSUED | DATE | | | ACREAGE | No. | CLASS | CERTIFICATE CHARACTER | WHOM ISSUED |
|------|----------------|------|---|---|---------|-----|-------|-----------------------|-------------|
| | | M | D | Y | | | | | |
| | | | | | | | | | |

Scale: 100' = one inch.
HARRY BRIDGEMAN & CO.
BRIAR FOREST FROM CORP.



ACREAGE

MEADOW
8.4371 AC
VOL. 117

BRIAR SEC THREE
1994-
PG. 649

UNRESTRICTED RESERVE "A"

UNRESTRICTED RESERVE "A"
3.8856 ACRES
180,543,047.4 SF

THE 1/2" BY 1/2" HATCH LOCATED AT THE BEGINNING OF THE POINT-OF-WAY INDICATES FROM 12" TO 12" DISTANCE TO A 12" X 12" CURB

BRIAR FOREST DRIVE 100' ROW