

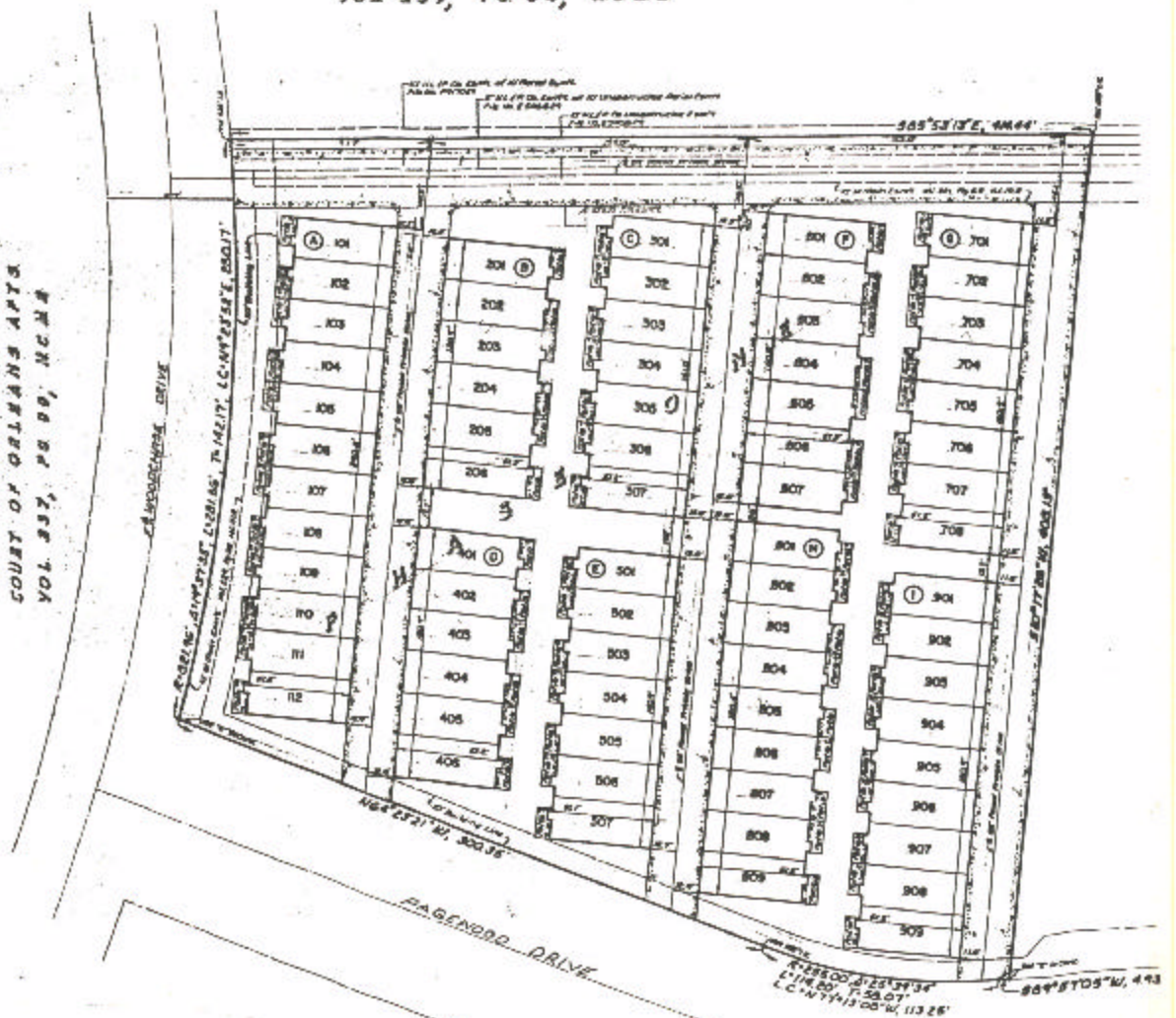
ASSESSOR'S BLOCK BOOK FOR HARRIS COUNTY, TEXAS

Block or Alteration No. **253** Survey or Addition **WESTCHASE FOREST T/H COND. PH. I** Plat No. **84-271** SD **08** Village
 Description **3.292Ac. C. ENNIS SUR. RESUBD. WESTCHASE FOREST TOWNHOMES SEC. ONE VOL. 115 PG. 793**

PATENT					CERTIFICATE					
No.	Wd.	TO WHOM ISSUED	DATE			REMARKS	No.	CLASS	CHARACTER	TO WHOM ISSUED
			M	D	Y					

Scale = one inch

SLM GROVE APTS
VOL 159, PG 34, HCMB



COURT OF ORLEANS APTS
VOL 337, PG 89, HCMB