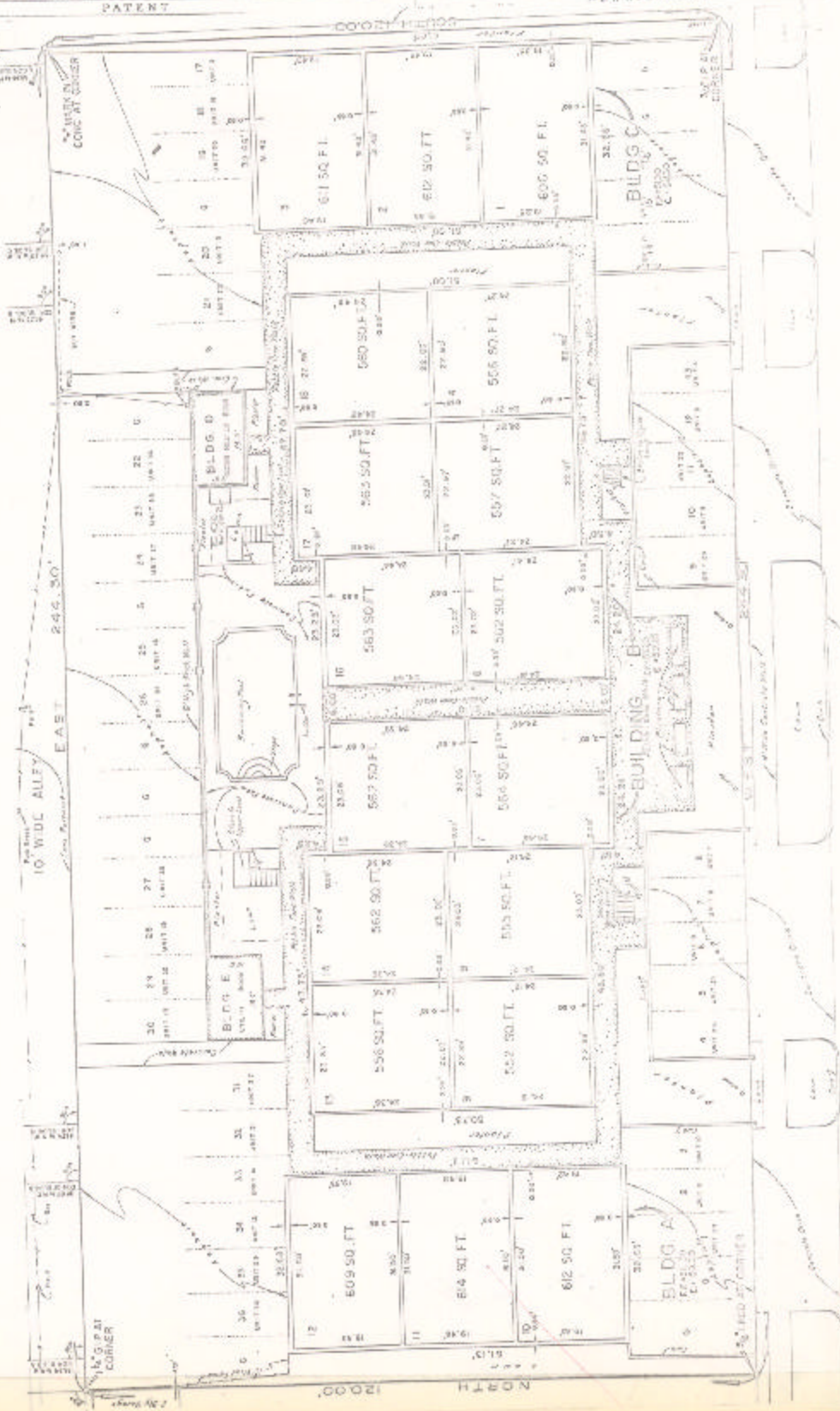


ASSESSOR'S BLOCK BOOK FOR HARRIS COUNTY, TEXAS

Bl. 36, 4, 9, 5. Section Land Survey or Addition: Mortrose Place Townhomes Conc. Plat. No. 78-421 s. d. 01  
Abstract No. 296 Description: 0.673 ac. O. Smith Sur. A 696, 7/5, lts. 6, 9, pt. E, S-A, bk. 14, MON. ROSE, ADD., vol. 26 pg. 140

Cont. REG. no. 64 pg. 117 PATENT  
No. Vol.

Scale N.T.S. as per plat  
D. T. SMITH, TR., 1978  
MORTROSE PARTNERS, L.P.



MARSHALL STREET