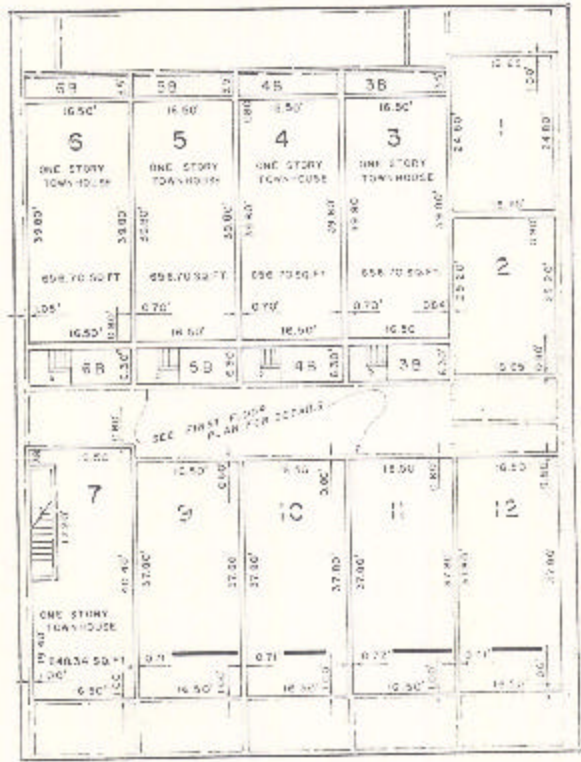


ASSESSOR'S BLOCK BOOK FOR HARRIS COUNTY, TEXAS

S.D.S. & P. Company Land
 Abstract No. 596 Survey or Addition KIPLING VILLAGE 7/4 Cond. Plat No. 78-390 S. D. O.
 Description: 0.2479 ac. G. Smith, Sur. A-896, 3/5 P. ts. 14, 15, 16, Montrose vol. 26 pg. 149

PATENT				CERTIFICATE				
No.	Vol.	TO WHOM ISSUED	DATE	ACREAGE	No.	CLASS	CHARACTER	TO WHOM ISSUED
			M	D				

Scale N.T.S. = one inch.
 CARNEY SUTER, 1976
 KIPLING VILLAGE COND. NO.



SECOND FLOOR

Unless otherwise indicated
 Common Elements and Common
 Land are assessed in the
 total of the land and
 improvements.