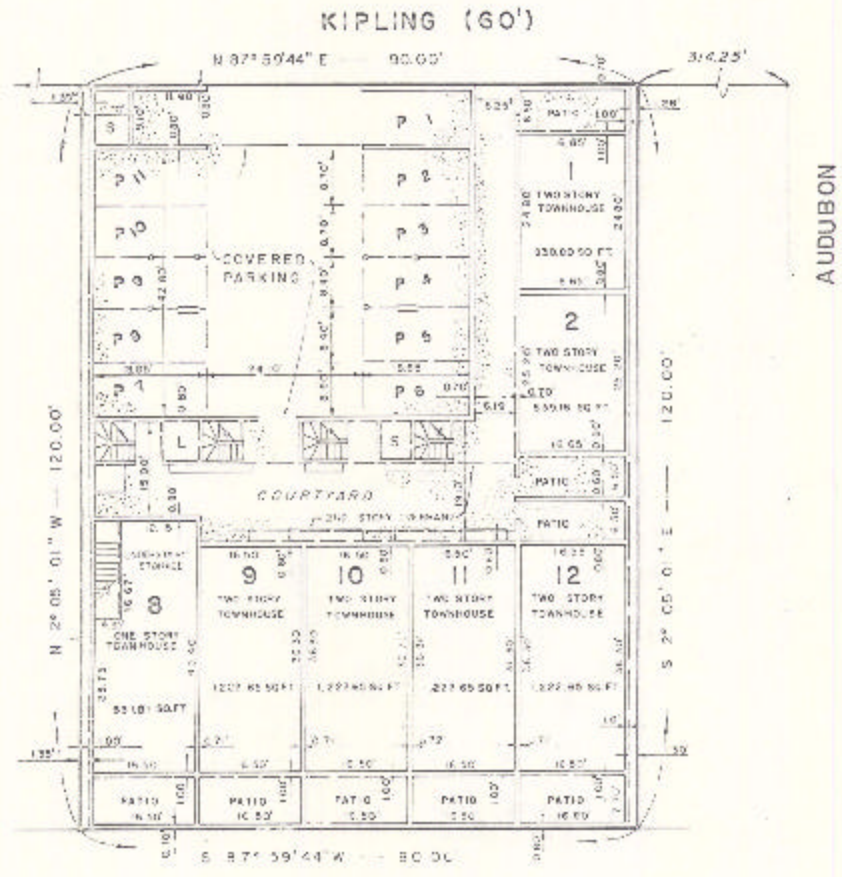


ASSESSOR'S BLOCK BOOK FOR HARRIS COUNTY, TEXAS

Block 4, 2 Common Land  
 Abstract No. 226 Survey or Addition, KIPLING VILLAGE T/H Cond Plat No. 78-390 S. D. 01  
 Description: 02479 ac. G. Smith, Sur. A-696, 7/5 Pl. Its 14, 15, 16, Montrose, vol. 26 ac. 145 Village

CONTRACT			PATENT			CERTIFICATE			
No.	Vol.	TO WHOM ISSUED	DATE			No.	CLASS	CHARACTER	TO WHOM ISSUED
			M	D	Y				

Scale N.T.S. = one inch.  
 DATED: JUNE 1, 1972  
 KIPLING VILLAGE COND INC.



FIRST FLOOR

Unless otherwise indicated  
 Common Elements and Common  
 Land are composed in the  
 total of the land and  
 improvements.