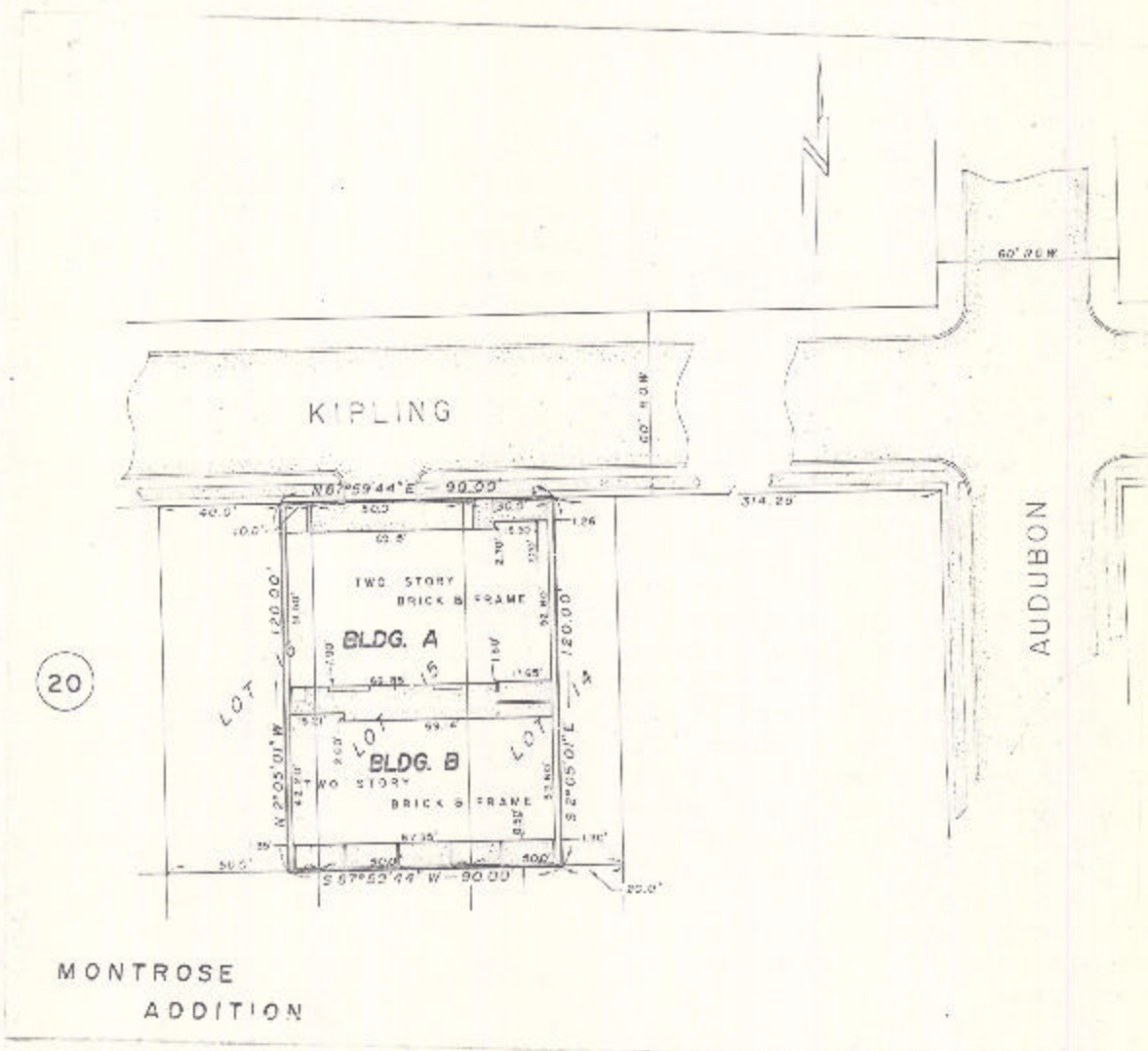


ASSESSOR'S BLOCK BOOK FOR HARRIS COUNTY, TEXAS

ELDS. A. B. Common Land
 Abstract No. 696 Survey or Addition KIPLING VILLAGE T/H Cond Plat No. 78-390 S. D. 01 Village
 Description: 0.2479 ac. O. Smith, Sur. A-696, R/S Pl. Its. 14, 15, 16 Montrose vol. 26 pg. 146

COMB. REC. No. of Pages		PATENT			CERTIFICATE				
No.	Vol.	TO WHOM ISSUED	DATE			No.	CLASS	CHARACTER	TO WHOM ISSUED
			K	D	T				

Scale N.T.S. = one inch.
 3/27/78 SITE 9, 1978
 KIPLING VILLAGE COND INC.



Unless otherwise indicated
 Crown Elements and Corgon
 Land are assessed in the
 total of the land and
 improvements.