

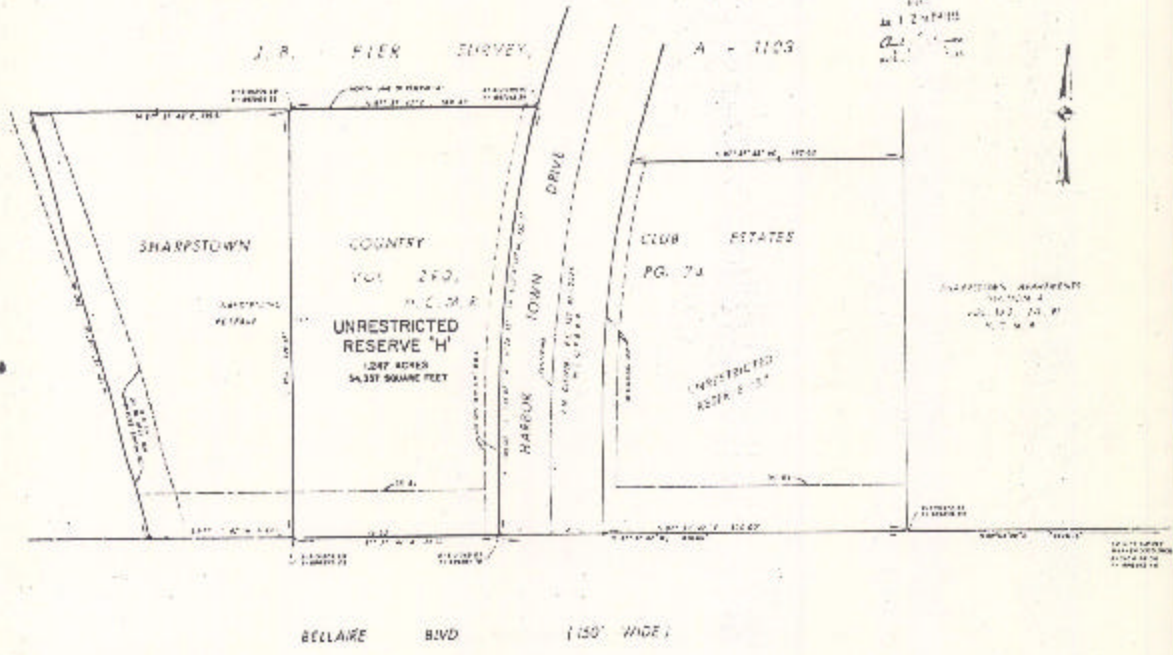
ASSESSOR'S BLOCK BOOK FOR HARRIS COUNTY, TEXAS

Block or RES. "H" HARBOR TOWN ADDN. TO  
 Abstract No. 1103 Survey of Addition SHARPSTOWN COUNTRY CLUB ESTS RES. "H" Plat No. 80-125 S. D. 01 Village  
 Description: J. R. PIER SURV. A PARTIAL RESERVE RES. "H" HARBOR TOWN ADDN. TO SHARPSTOWN COUNTRY CLUB ESTS. VOL. 114, PG. 503

PATENT				CERTIFICATE				
No.	Vol.	TO WHOM ISSUED	DATE	ACREAGE	No.	CLASS	CHARACTER	TO WHOM ISSUED
			M D Y					

Scale 80 = one inch.  
 FRED. PIKE COMPT. CO., 1900  
 MAC NAUGHTON & CO. '78.

2.57 4  
 1981



SHARPSTOWN	COUNTRY CLUB	ESTS	RESERVE "H"	CLUB ESTATES	RESERVE "H"
10	12	12	12	12	12

MARY MEARS BLVD