

ASSESSOR'S BLOCK BOOK FOR HARRIS COUNTY, TEXAS

Block or Abstract No. 855 Survey or Addition WESTCHASE SEC. 11 Plat No. 77-167 S. D. 08 Village
Description: 104.012 ac. I.E. Wade Sur. A-855 v. 45 p. 159, 175 of Pt. Pinedale, subd. v. 28 p. 95

PATENT			CERTIFICATE		
No.	Vol.	TO WHOM ISSUED	No.	CLASS	CHARACTER

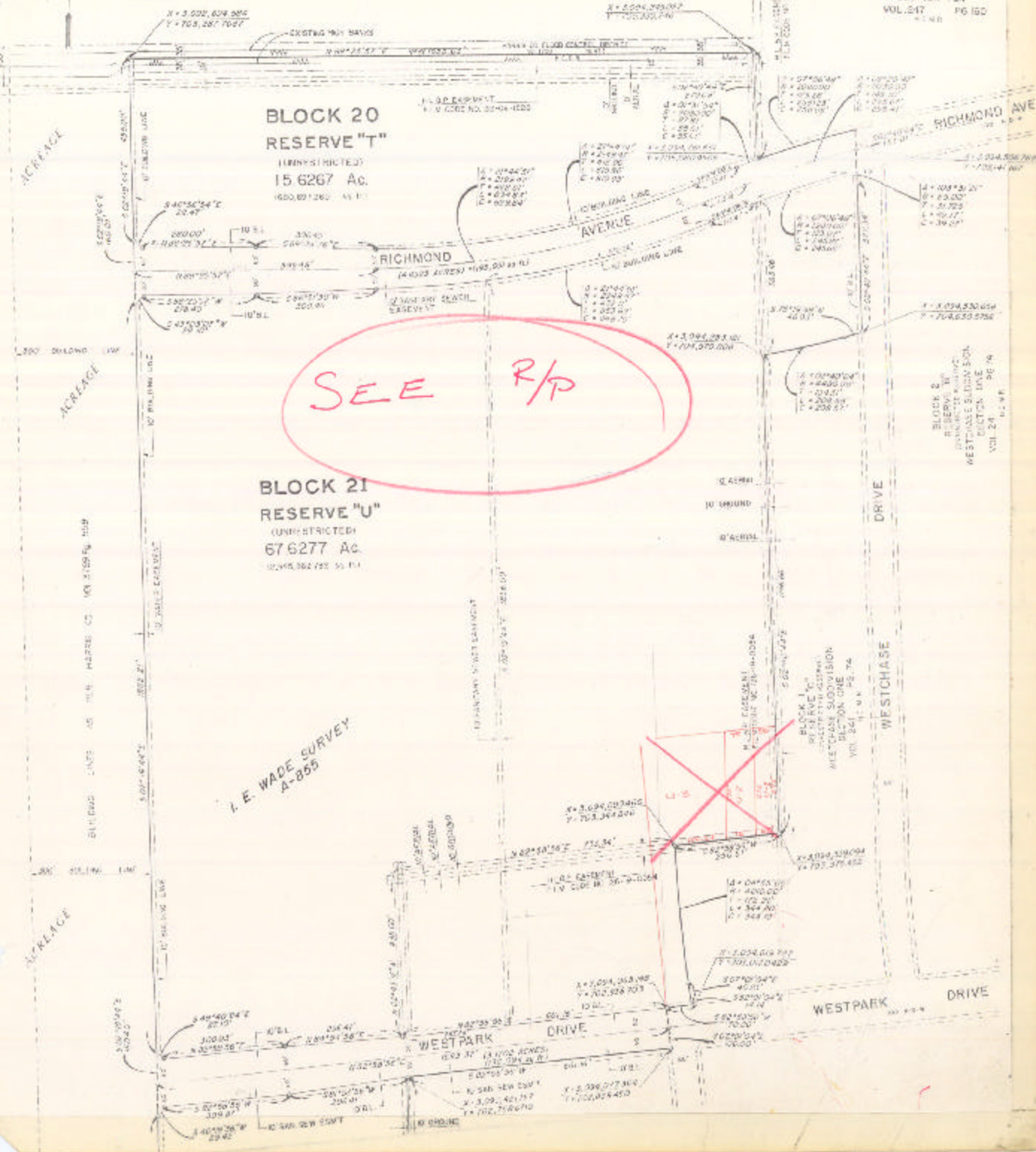
PAGE 1 of 2

Scale 200' = one inch.
TEXAS 877
TENWEST

DRESSER INDUSTRIES INC.
300 N. W. 10th St.
DALLAS, TEXAS

1979 UNIT
10,000 Ac

BLOCK 18
RESERVE "R"
WESTCHASE SUBDIVISION
SECTION TEN
VOL. 247 PG. 150



SEE R/P

BLOCK 20
RESERVE "T"
(UNRESTRICTED)
15.6267 Ac.
1600, 871260 S. P. 11

BLOCK 21
RESERVE "U"
(UNRESTRICTED)
67.6277 Ac.
10,445,362,750 S. P. 11

I. E. WADE SURVEY
A-855

BLOCK 17
RESERVE "Q"
WESTCHASE SUBDIVISION
SECTION ONE
VOL. 241 PG. 74

BLOCK 2
RESERVE "B"
WESTCHASE SUBDIVISION
SECTION FIVE
VOL. 24 PG. 14