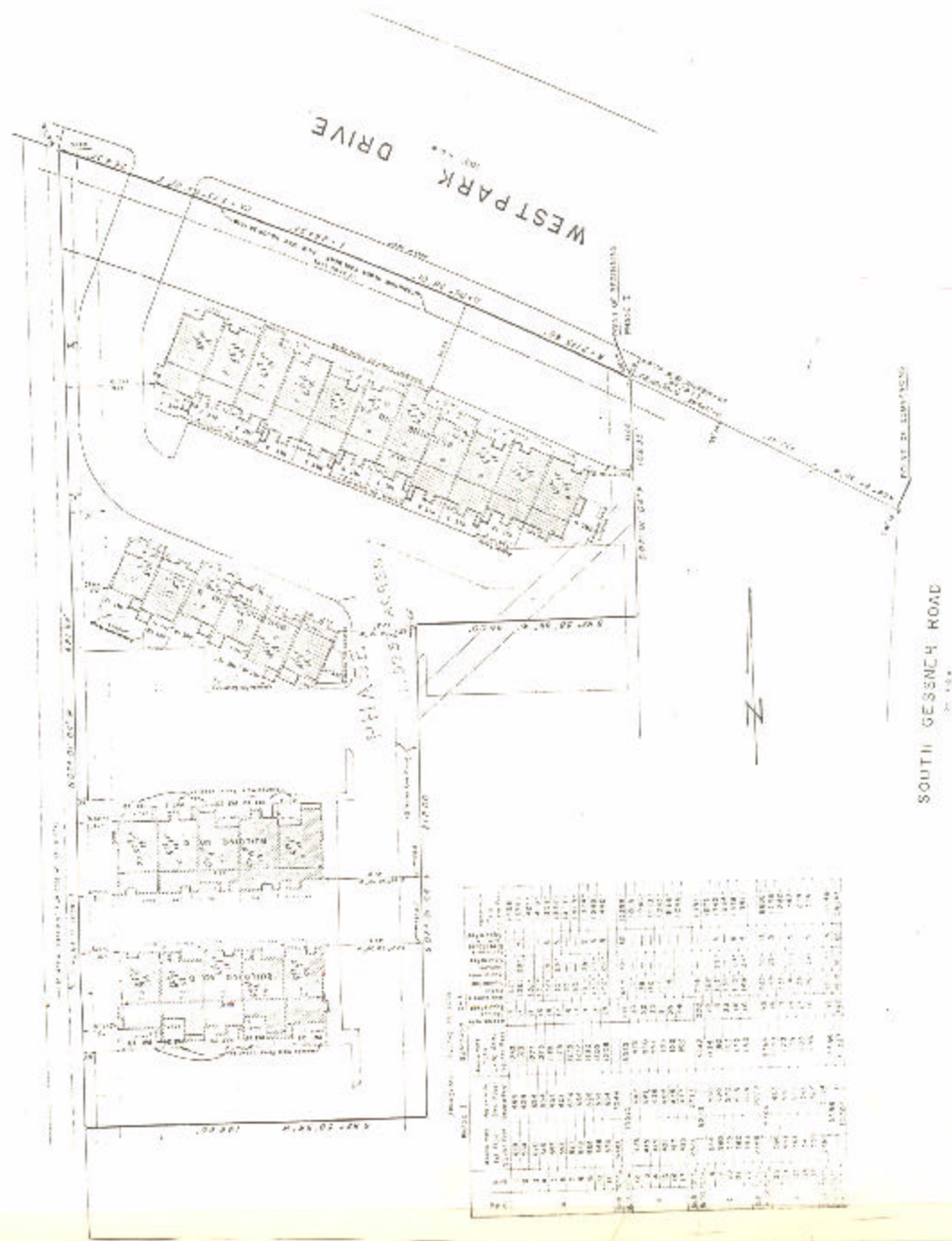


ASSESSOR'S BLOCK BOOK FOR HARRIS COUNTY, TEXAS

Block or Abstract No. _____ Survey or Addition SUNRIDGE VILLAS PH. 12 W/WHOUSES Plat No. _____ S. D. _____ Village _____
 Description: 1.5951 AC. A PARTIAL RESUB. OF WESTCHASE SEC. 9. REST'R.

No.	Vol.	TO WHOM ISSUED	DATE			ACREAGE	No.	CLASS	CERTIFICATE	
			M	D	Y				CHARACTER	TO WHOM ISSUED

Scale 40' = one inch.



Lot No.	Acres	Area	Perimeter	Area	Perimeter	Area	Perimeter
1	0.125	1,250	100	1,250	100	1,250	100
2	0.125	1,250	100	1,250	100	1,250	100
3	0.125	1,250	100	1,250	100	1,250	100
4	0.125	1,250	100	1,250	100	1,250	100
5	0.125	1,250	100	1,250	100	1,250	100
6	0.125	1,250	100	1,250	100	1,250	100
7	0.125	1,250	100	1,250	100	1,250	100
8	0.125	1,250	100	1,250	100	1,250	100
9	0.125	1,250	100	1,250	100	1,250	100
10	0.125	1,250	100	1,250	100	1,250	100
11	0.125	1,250	100	1,250	100	1,250	100
12	0.125	1,250	100	1,250	100	1,250	100
13	0.125	1,250	100	1,250	100	1,250	100
14	0.125	1,250	100	1,250	100	1,250	100
15	0.125	1,250	100	1,250	100	1,250	100
16	0.125	1,250	100	1,250	100	1,250	100
17	0.125	1,250	100	1,250	100	1,250	100
18	0.125	1,250	100	1,250	100	1,250	100
19	0.125	1,250	100	1,250	100	1,250	100
20	0.125	1,250	100	1,250	100	1,250	100
21	0.125	1,250	100	1,250	100	1,250	100
22	0.125	1,250	100	1,250	100	1,250	100
23	0.125	1,250	100	1,250	100	1,250	100
24	0.125	1,250	100	1,250	100	1,250	100
25	0.125	1,250	100	1,250	100	1,250	100
26	0.125	1,250	100	1,250	100	1,250	100
27	0.125	1,250	100	1,250	100	1,250	100
28	0.125	1,250	100	1,250	100	1,250	100
29	0.125	1,250	100	1,250	100	1,250	100
30	0.125	1,250	100	1,250	100	1,250	100
31	0.125	1,250	100	1,250	100	1,250	100
32	0.125	1,250	100	1,250	100	1,250	100
33	0.125	1,250	100	1,250	100	1,250	100
34	0.125	1,250	100	1,250	100	1,250	100
35	0.125	1,250	100	1,250	100	1,250	100
36	0.125	1,250	100	1,250	100	1,250	100
37	0.125	1,250	100	1,250	100	1,250	100
38	0.125	1,250	100	1,250	100	1,250	100
39	0.125	1,250	100	1,250	100	1,250	100
40	0.125	1,250	100	1,250	100	1,250	100
41	0.125	1,250	100	1,250	100	1,250	100
42	0.125	1,250	100	1,250	100	1,250	100
43	0.125	1,250	100	1,250	100	1,250	100
44	0.125	1,250	100	1,250	100	1,250	100
45	0.125	1,250	100	1,250	100	1,250	100
46	0.125	1,250	100	1,250	100	1,250	100
47	0.125	1,250	100	1,250	100	1,250	100
48	0.125	1,250	100	1,250	100	1,250	100
49	0.125	1,250	100	1,250	100	1,250	100
50	0.125	1,250	100	1,250	100	1,250	100
51	0.125	1,250	100	1,250	100	1,250	100
52	0.125	1,250	100	1,250	100	1,250	100
53	0.125	1,250	100	1,250	100	1,250	100
54	0.125	1,250	100	1,250	100	1,250	100
55	0.125	1,250	100	1,250	100	1,250	100
56	0.125	1,250	100	1,250	100	1,250	100
57	0.125	1,250	100	1,250	100	1,250	100
58	0.125	1,250	100	1,250	100	1,250	100
59	0.125	1,250	100	1,250	100	1,250	100
60	0.125	1,250	100	1,250	100	1,250	100
61	0.125	1,250	100	1,250	100	1,250	100
62	0.125	1,250	100	1,250	100	1,250	100
63	0.125	1,250	100	1,250	100	1,250	100
64	0.125	1,250	100	1,250	100	1,250	100
65	0.125	1,250	100	1,250	100	1,250	100
66	0.125	1,250	100	1,250	100	1,250	100
67	0.125	1,250	100	1,250	100	1,250	100
68	0.125	1,250	100	1,250	100	1,250	100
69	0.125	1,250	100	1,250	100	1,250	100
70	0.125	1,250	100	1,250	100	1,250	100
71	0.125	1,250	100	1,250	100	1,250	100
72	0.125	1,250	100	1,250	100	1,250	100
73	0.125	1,250	100	1,250	100	1,250	100
74	0.125	1,250	100	1,250	100	1,250	100
75	0.125	1,250	100	1,250	100	1,250	100
76	0.125	1,250	100	1,250	100	1,250	100
77	0.125	1,250	100	1,250	100	1,250	100
78	0.125	1,250	100	1,250	100	1,250	100
79	0.125	1,250	100	1,250	100	1,250	100
80	0.125	1,250	100	1,250	100	1,250	100
81	0.125	1,250	100	1,250	100	1,250	100
82	0.125	1,250	100	1,250	100	1,250	100
83	0.125	1,250	100	1,250	100	1,250	100
84	0.125	1,250	100	1,250	100	1,250	100
85	0.125	1,250	100	1,250	100	1,250	100
86	0.125	1,250	100	1,250	100	1,250	100
87	0.125	1,250	100	1,250	100	1,250	100
88	0.125	1,250	100	1,250	100	1,250	100
89	0.125	1,250	100	1,250	100	1,250	100
90	0.125	1,250	100	1,250	100	1,250	100
91	0.125	1,250	100	1,250	100	1,250	100
92	0.125	1,250	100	1,250	100	1,250	100
93	0.125	1,250	100	1,250	100	1,250	100
94	0.125	1,250	100	1,250	100	1,250	100
95	0.125	1,250	100	1,250	100	1,250	100
96	0.125	1,250	100	1,250	100	1,250	100
97	0.125	1,250	100	1,250	100	1,250	100
98	0.125	1,250	100	1,250	100	1,250	100
99	0.125	1,250	100	1,250	100	1,250	100
100	0.125	1,250	100	1,250	100	1,250	100