

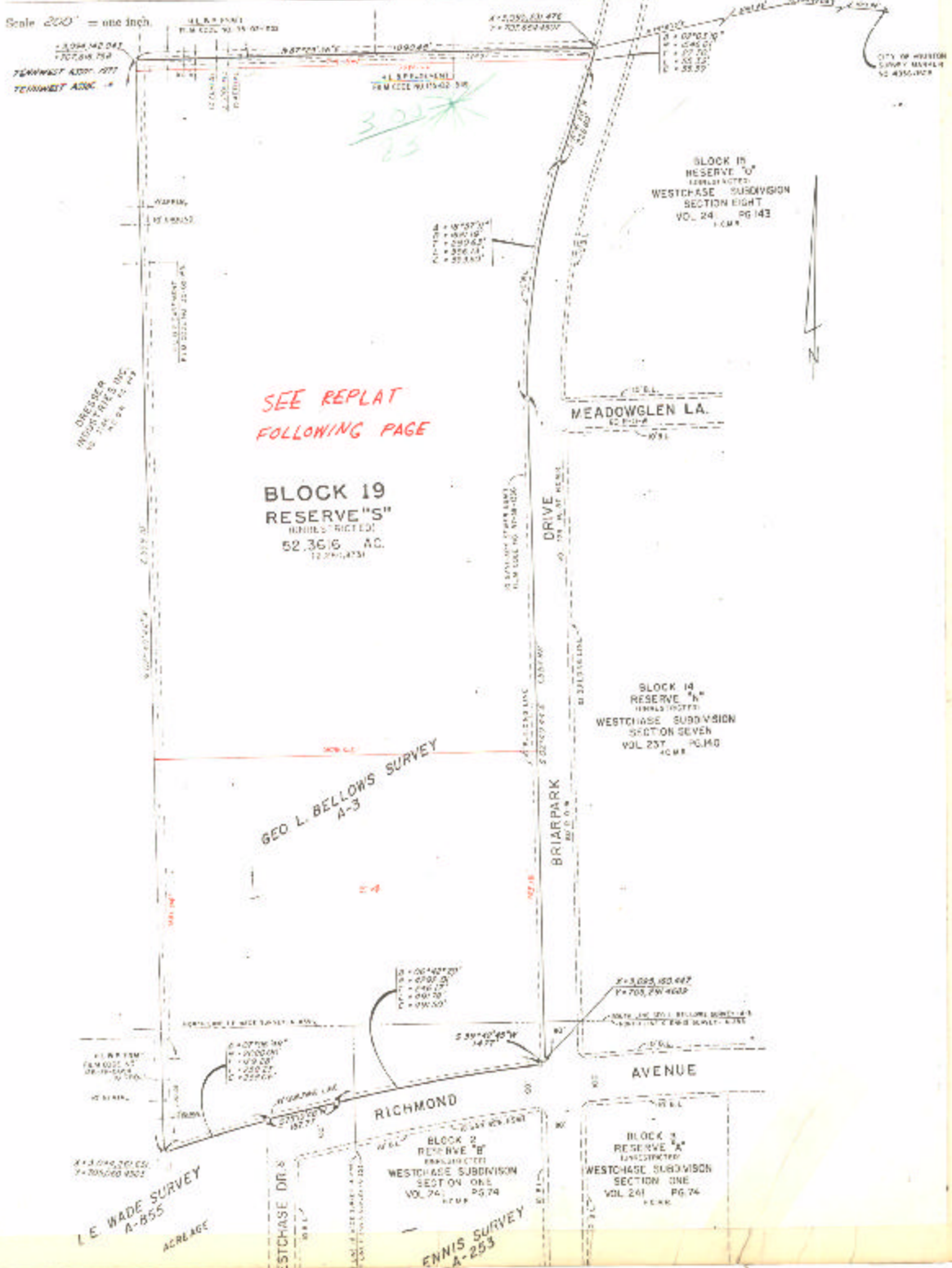
ASSESSOR'S BLOCK BOOK FOR HARRIS COUNTY, TEXAS

Block or 1/4 AC S
Abstract No. 885, 283, Survey or Addition WESTCHASE SUBD. SEC. 10, Plat No. 77-85, S. D. C8
Description: 57.3616 AC. G.L. BELLOWS, L.E. WADE & C. ENNIS, SURV. VOL. 80 PG. 141, VOL. 81 PG. 125, VOL. 82 PG. 114

CITY OF HOUSTON
CLERK'S OFFICE
NO. 43561228

No.	Vol.	PATENT			ACREAGE	No.	CLASS	CLASS
		TO WHOM ISSUED	DATE	CHAS.				

Scale 200' = one inch.



SEE REPLAT
FOLLOWING PAGE

BLOCK 19
RESERVE "S"
RESTRICTED
52.3616 AC.
(77-85-873)

BLOCK 18
RESERVE "U"
RESTRICTED
WESTCHASE SUBDIVISION
SECTION EIGHT
VOL. 24 PG. 143
C.M.A.

MEADOWGLEN L.A.

BLOCK 14
RESERVE "A"
RESTRICTED
WESTCHASE SUBDIVISION
SECTION SEVEN
VOL. 23 PG. 140
C.M.A.

GEO. L. BELLOWS SURVEY
A-3

BLOCK 2
RESERVE "B"
RESTRICTED
WESTCHASE SUBDIVISION
SECTION ONE
VOL. 24 PG. 74
C.M.A.

BLOCK 3
RESERVE "A"
RESTRICTED
WESTCHASE SUBDIVISION
SECTION ONE
VOL. 24 PG. 74
C.M.A.

L.E. WADE SURVEY
A-855
ACREAGE

ENNIS SURVEY
A-253