

ASSESSOR'S BLOCK BOOK FOR HARRIS COUNTY, TEXAS

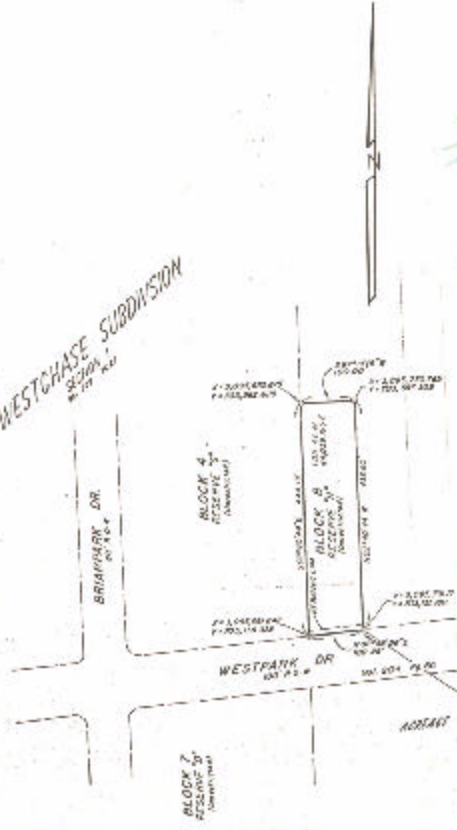
Block or 6 AC.
 Abstract No. 253 Survey or Addition WESTCHASE SUBD. SEC. TWO Plat No. 75-82 S. D. 19 Village _____
 Description: LOUAG. C. EDWARDS SUR. VOL. 92, P. 114

PATENT				CERTIFICATE				
No.	Vol.	TO WHOM ISSUED	DATE	ACREAGE	No.	CLASS	CHARACTER	TO WHOM ISSUED

Scale 200' = one inch.
 WESTCHASE PLACE 1922
 RAYBOLD, PRODUCER UNION INC.

1977
 UNIT
 20,000 AC.

WESTCHASE SUBDIVISION
 2000 AC.



3.00*
 75

75
 80