

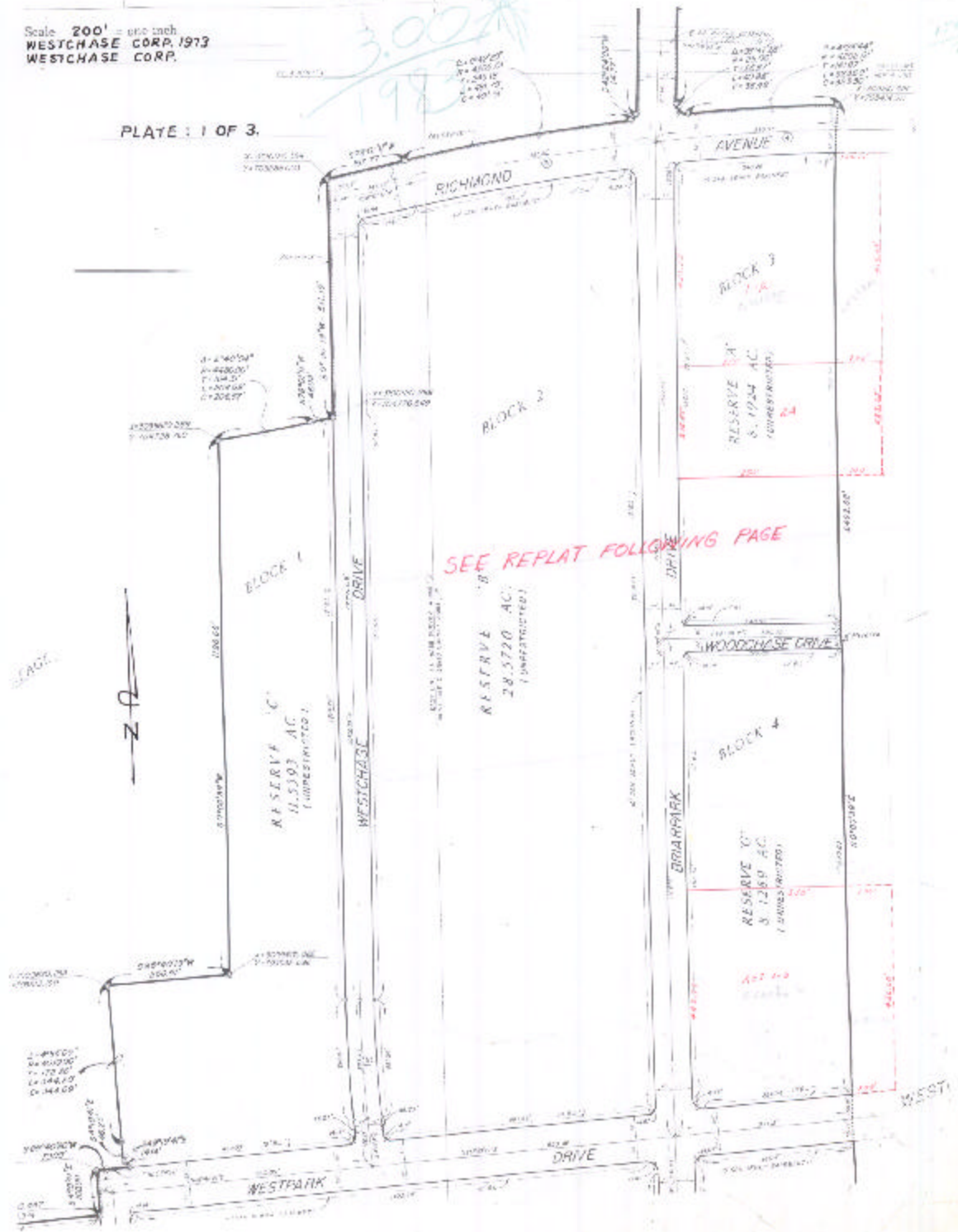
ASSESSOR'S BLOCK BOOK FOR HARRIS COUNTY, TEXAS

Block of 1 to 7-RES. A to G. Abstract No. 3-253895 Survey or Addition WESTCHASE SEC. 1. REPLAT Plat No. 73-72. S T 8 Village.
Description: J.E. GIDD AC. GEO. BELLOWS SUR. A-3-C. ENNIS SUR. A-253 & I.E. WADE SUR. A-855. RESUBD OF FIRST RECORDING.

PATENT VOL. 106 PG. 348-354					CERTIFICATE			
No.	Vol.	TO WHOM ISSUED	DATE	ACREAGE	No.	CLASS	CHARACTER	TO WHOM ISSUED

Scale: 200' = one inch
WESTCHASE CORP. 1973
WESTCHASE CORP.

PLATE: 1 OF 3.



SEE REPLAT FOLLOWING PAGE

